



Dry Lining Solutions

The following solutions highlight some of the widely used systems from the UK's largest dry lining manufacturers – British Gypsum, Knauf Drywall and Lafarge Plasterboard. Sheffield Insulations is the UK's leading dry lining distributor offering the widest and most in depth range of materials through our national network of branches. The Speedline range of dry lining metal and accessories is also stocked nationwide.



IN THIS SECTION...

Partitioning Systems – Stud and Track

Housing Partition Systems for Fast Construction

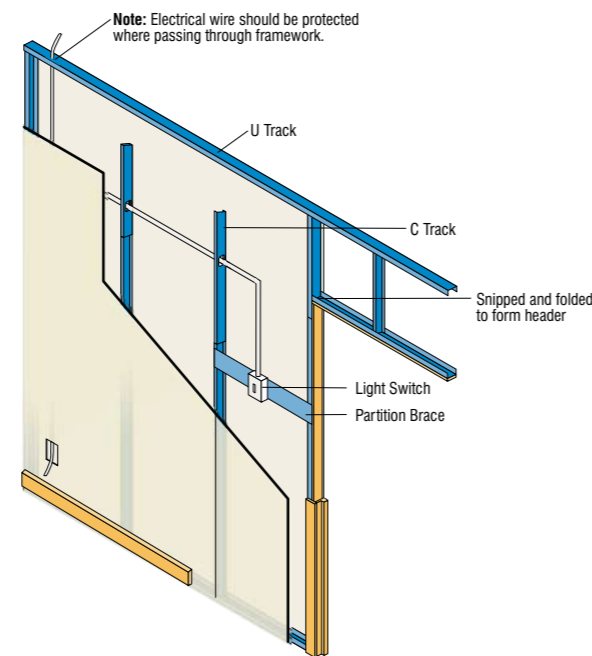
Wall/Ceiling Lining Channels

M/F Ceilings Systems

Partitioning Systems - Stud and Track

Non-load bearing systems for use in domestic and commercial situations for heights up to 12m and a wide range of partition thicknesses.

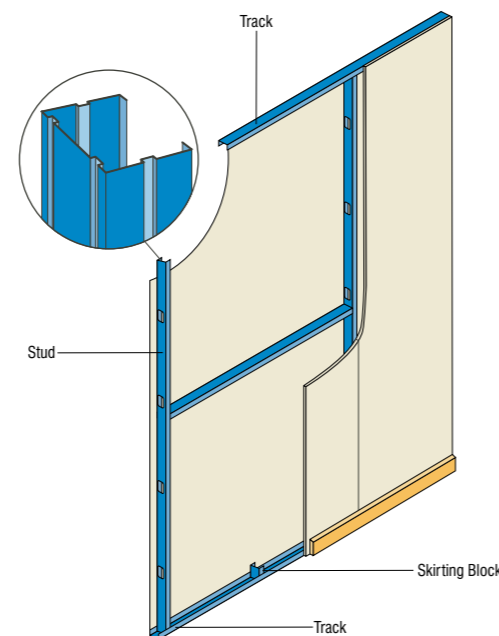
- Quick to erect, lightweight with less on-site waste than timber.
- Metal stud is dimensionally accurate and will not twist or bow.
- Range of stud and track widths including 50mm, 60mm, 70mm, 90mm and 146mm.
- Mineral wool can be easily installed to upgrade sound insulation.
- Easy to cut using tin snips.
- Higher performance walls can be constructed to meet more demanding levels of fire and acoustic insulation including I stud and twin frame systems.



Housing Partitioning Systems for Fast Construction

Non-load bearing internal wall systems for use in domestic housing using fast drywall construction techniques.

- Systems are designed to have a minimum number of components.
- Additional options are offered, for instance, to comply with the new Part E Building Regulations as well as impact and additional fire resistance.

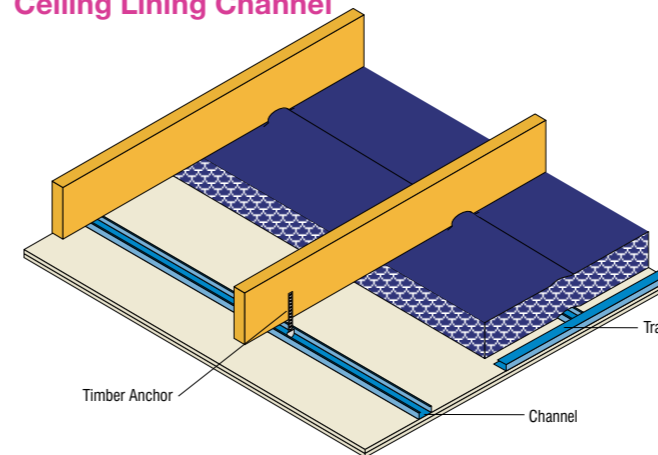


Wall/Ceiling Lining Channels

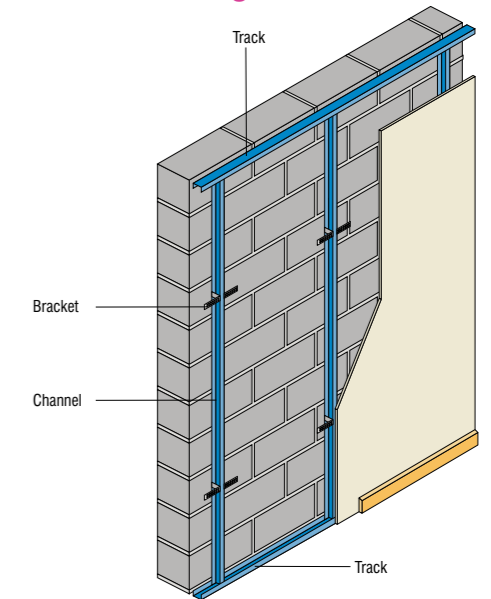
Systems widely used in a variety of buildings, ranging from private houses to commercial buildings, on both new build and refurbishment applications.

- Systems comprise a lightweight metal frame fixed to a masonry background, which can then be lined with plasterboard or thermal laminate.
- Generally used to enable the incorporation of services within the lining void and to correct irregularities in the background.
- These versatile systems can also be used to line ceilings with the lining jointed to achieve a smooth finish prior to decoration.

Ceiling Lining Channel



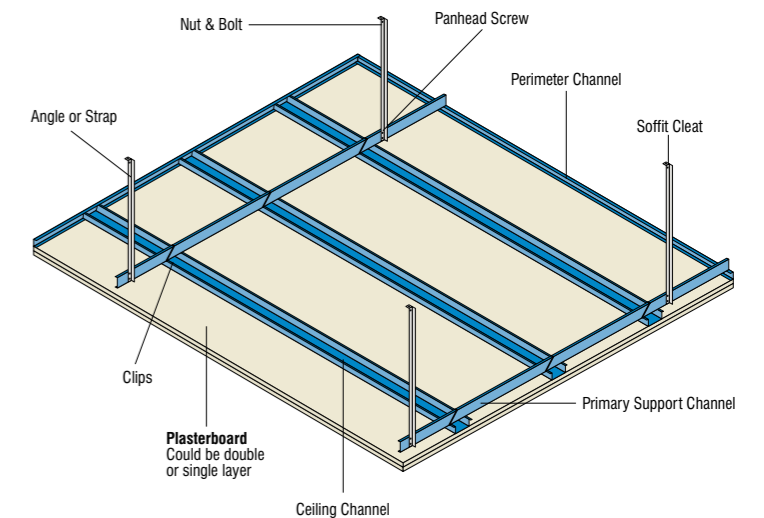
Wall Lining Channel



M/F Ceilings Systems

Concealed grid M/F suspended ceiling systems suitable for most internal dry lining applications.

- Robust systems able to accept some degree of load bearing.
- The galvanised grid is suspended by either strap hangers or angle sections fixed to the structural soffit with soffit cleats.
- Boards can then be fixed on to the metal framework, taped and jointed or skim finished with plaster.
- The systems can be used with a wide range of boards depending on the performance requirements.
- Acoustic performance can also be enhanced through the use of acoustic hangers.



Indicative Quantities Per M² of M/F Suspended Ceiling Metals

SECTION	QUANTITIES
MF5 Ceiling Section	2.3LM
MF7 Primary Support Channel	0.8LM
MF9 Connecting Clip	2.0 No.
MF6 Perimeter Channel	1.0LM

Product Solutions



Wallboards

Standard	Knauf Baseboard Knauf Wallboard	Gyproc Handiboard Gyproc Wallboard	GTEC Baseboard GTEC Standard Plasterboard
10kg	Choose from performance range	Gyproc Wallboard Ten	GTEC E Board
Vapour	Knauf Vapourshield Knauf Baseboard Vapour Check	Gyproc Wallboard Duplex Gyproc Handiboard Duplex	GTEC Vapour Board
Moisture	Knauf Moistureshield	Gyproc Moisture Resistant Board	GTEC Moisture Board
Impact	Knauf Denseshield	Gyproc Duraline	GTEC Megadeco
Fire	Knauf Fireshield	Gyproc Fireline	GTEC Fire Board
Fire & Vapour	Knauf Fireshield Vapour Check	Gyproc Fireline Duplex	GTEC Universal Board
Fire & Moisture	Knauf Fire Moistureshield	Gyproc Fireline Moisture Resistant	GTEC Fire MR Board
Acoustic	Knauf Soundshield	Gyproc Soundbloc	GTEC dB Board
Acoustic & Moisture	Knauf Sound Moistureshield	Gyproc Soundbloc Moisture Resistant	
Specialist Systems	Knauf Coreboard (19mm) Knauf Plank	Gyproc Coreboard (19mm) Gyproc Plank	GTEC Coreboard (25mm) GTEC Plank GTEC Acoustic Homespan Board
Carbon Neutral	Knauf Futurepanel		
Tile Backing	Knauf Aquapanel		GTEC Aquapanel

Thermal Laminates

Standard Performance	Knauf Thermal Laminate Knauf Thermal Laminate Vapour Check	Gyproc Thermaline Basic Gyproc Thermaline Basic Vapour Check Gyproc Thermaline Platinum	GTEC Thermal Board
Improved Performance	Knauf Thermal Laminate Plus	Gyproc Thermaline Plus	GTEC Thermal K Board
High Performance	Knauf Phenolic Laminate	Gyproc Thermaline Super	GTEC Thermal XP Board
Thermal & Acoustic		Gyproc TriLine	GTEC Thermal XP Board

Metal

Acoustic Systems	Knauf Acoustic C Stud	Gypframe AcouStud	GTEC Acoustic Homespan Partition System
Ceiling Systems	MF Ceiling Systems Knauf C Form I & II	Casoline MF	GTEC Dryliner Ceiling System GTEC Suspended MF Ceiling System
Wall Lining	Metal Furring Wall Lining	DryLyner RF/TL GypLyner	GTEC Dryliner System GTEC Independent Wall Lining System
Partition	Knauf C Stud	SureLyner	GTEC Direct Bond System
Shaftwall	Knauf Shaftwall	GypWall Rapid Shaftwall	GTEC Metal Stud Partition System GTEC Shaftwall System

A wide range of Additional Products & Accessories for Dry Lining Applications

Dry Lining Accesories

- Access Panels
- Aluminium Trims
- Beads
- Corner Tape
- Cove & Cornice
- Drywall Screws & Nails
- Fermacell Boards
- Fire Rated Acoustic Mastic
- Hand Tools
- James Hardie HardieBacker
- James Hardie Siding HardiePlank
- Jointing Products
- Kilwaughter K-Rend
- Knauf Aquapanel
- Paper Tape
- Plasters
- Pyrok Cement Particle Boards
- Readymix Jointing Products
- Scrim Tape
- Speedline Protection Board
- Versapanel
- Weber Monocouche Renders

Metal Systems

- Acoustic Floor Systems
- Acoustic Studs
- Housing Partition Systems
- MF Ceiling Systems
- Shaftwall Systems
- Stud and Track
- Wall/Ceiling Lining Systems

Examples of Ancillary Products



Speedline Range Of Accessories

Speedline is a competitively priced, quality range of dry lining metal and accessories stocked throughout our national branch network.



Cove and Cornice

Decorative plaster cove and cornice with a paper face for direct application of paint finishes. Offered with cove adhesive to ensure fast trouble free fixing.



Weber Renders

Monocouche through-coloured mineral renders, which can be scrape or spray finished, requiring only the addition of water and can be applied by hand or machine-pump for use on all types of masonry backgrounds. Traditional external renders such as Cullamix Tyrolean and OCR and decorative finishes also available.

Your Dry Lining Applications questions answered

1. Which side of plasterboard is designed to receive a plaster skim coat?

A. Skimming should be carried out on the face with no paper overlap. On Gyproc Wallboard this is the ivory face. This advice also applies to boards with sound, fire and impact resistance.

2. Can damp walls be dry lined?

A. Walls must first be treated and allowed to dry before being dry lined. Dry lining does not cure damp walls.

3. Is jointing required to metal stud partitions if fire resistance has been specified?

A. It is important that jointing is carried out to prevent hot gases passing through the partition which could lead to premature failure.

4. Do I need to seal the perimeter of a partition even if it is on a flat surface?

A. To achieve optimum sound insulation you do need to use acoustic sealant to seal the entire partition perimeter to adjoining surfaces. Sealant should be applied to the underside of all tracks and to studs abutting walls.

5. When installing partitions and wall linings over newly laid concrete floors do I need to install a damp proof membrane?

A. Before installing the partition it is good practice to lay a damp proof membrane (DPM).