

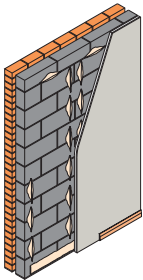
# Installation and finishing

Panel Systems offers Styroliner dry lining boards in a range of thicknesses providing, quick, simple and cost-effective methods of fixing plasterboard Styroliner to masonry walls.

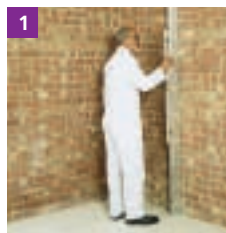
The choice of thickness will depend on the U-value to be attained.

## System installation

### STYROLINER (New Build)



Uses the principle of Gyproc Dri-Wall Adhesive dabs to bond Panel Systems Styroliner directly to masonry walls.



#### Installing 1200mm wide Styroliner

- Determine high spots on the wall and plumb position to the ceiling and floor.



- Transfer this dimension to the room corners, add an allowance of 10mm plus the **Styroliner** thickness and strike continuous chalk lines on the floor and ceiling.



- Mark wall with lines at 1200mm centres to indicate board positioning.



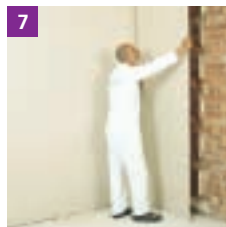
- Trowel apply a continuous fillet of Gyproc Dri-Wall Adhesive to the perimeter of the wall, services and openings where required.
- Commence dry lining from a window/door reveal or internal angle.
- Trowel apply adhesive to form dabs 50mm to 75mm wide and about 250mm long.



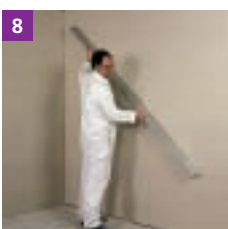
- Position dabs of Gyproc Dri-Wall Adhesive in **three** vertical rows to receive each board.
- NB** Ensure that the dabs adjacent to a board joint are approximately 25mm in from the edge to avoid bridging the joint.
- Apply intermediate dabs at ceiling level.



- Apply a continuous band of Gyproc Dri-Wall Adhesive at skirting level.



- Cut **Styroliner** 15mm short of the floor to ceiling height.
- Position the first board, insulation face against the dabs, with the bottom edge resting on plasterboard packing strips.



- Tap the **Styroliner** back firmly using a straight-edge until it aligns with the ceiling and floor lines.

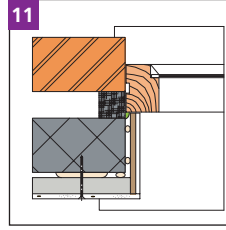


- Gently lift using a footlifter until the **Styroliner** is tight against the ceiling.
- Insert additional packing strips at the base to wedge the board in place and remove the footlifter.
- Apply dabs for the next **Styroliner** board and continue the drylining with laminates lightly butted.
- At internal angles cut **Styroliner** to fit and position the cut edge to the angle.



10

- At reveals and external angles run the lining past the corner and cut back the insulating backing so as to form a neat junction with the reveal board or wall lining.



11

- Use thinner board thicknesses for the window reveals.



12

- When the dabs have set, install Gyproc Nailable Plugs to provide secondary mechanical fixings. Insert two plugs per board, 15mm in from each edge at mid-height.
- Select plugs of sufficient length to give a 25mm nominal penetration into the solid wall and drill hole 5mm longer than the plug.
- Drive each plug in until the head is slightly below the liner without fracturing it.

# Panel Systems - Styroliner