

TimTie



New build cavity wall tie for timber frame constructions

FEATURES

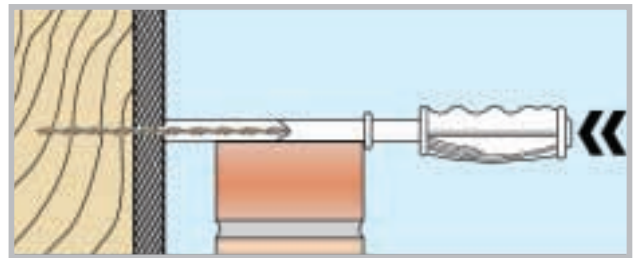
- One-piece grade 304 or 316 stainless steel tie
- Type 3 and Type 6 ties with self-tapping helical design
- Secure and lasting stress-free connection
- Rapid, easy hammer-driven installation, through insulation
- Suitable for use with 'warm frame' rigid insulation
- Great axial strength resists all wind loads
- Multiple drip points prevent cross-cavity water transfer

BENEFITS

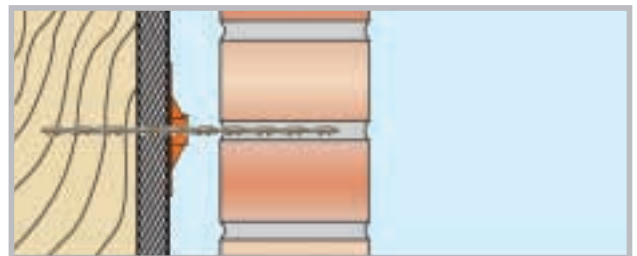
- Excellent holding power in timber, mortar, masonry and resin
- Installed through insulation without affecting thermal properties
- Hammered directly into timber stud, exactly where required
- Rotational flexibility accommodates normal building movement
- No disturbance to newly laid brickwork
- No loosening of internal drywall fasteners
- Suitable for cavities up to 125mm



INSTALLATION



Load tie into hand held support tool. Position as required as outer leaf masonry is constructed. Hammer into timber stud, through insulation when fitted, and fit retaining clip.



Outer end of tie fully embedded in masonry leaf mortar.

TIMTIE SELECTION – TIE LENGTH - mm

CAVITY - mm	DD140 PT 2	
	TYPE 6	TYPE 3
50	195	220
75	220	245
100	245	270
125	270	295
125+	Consult Helifix Technical Sales Team	

CLASSIFICATION OF TIMTIE, IN ACCORDANCE WITH BS EN 845-1:2003, USING DD140 PART 2 1987 CRITERIA

Type 2	Not applicable
Type 3	With 75mm Timber Penetration
Type 6	With 50mm Timber Penetration
Minimum Tie Density (To be used as a guide only)	4.4 Ties per m ²
Nominal Diameter	4.5mm

NOTE: If your TimTie application involves a building of three storeys or more, call the Helifix Technical Sales Team for advice on 020