

Rockpanel Rockclad is a very durable panel material that has been specially developed for use as facade cladding and for detailing. The basic panel consists of high-quality rock fibre compressed with a small quantity of organic binding agent. This produces a very lightweight panel, which due to its composition can be very easily worked and also easily handled. The effect of fluctuations in the humidity of the air and temperature differences on the panel is very slight. The panel is completely waterrepellent.



ROCKPANEL ROCKCLAD	DURABLE				XTREME
Panel width in mm	1200				1200
Panel thickness	6		8		8
Panel dimensions	2500	3050	2500	3050	3050
Thickness tolerance	+0,5/-0,5				+0,5/-0,5
Length/width tolerance	+2/-2				+2/-2
Diagonal tolerance	≤ 4				≤ 4
Nominal volumetric mass kg/m <sup>3</sup>	1050 + 150/-150				1200 + 150/-100
Nominal mass of surface kg/m <sup>2</sup>	6,3		8,4		9,6
Option:					
- Non standard boardsizes	> 600 m <sup>2</sup>				> 600 m <sup>2</sup>
- Anti-Graffiti finish	> 100 m <sup>2</sup>				> 100 m <sup>2</sup>

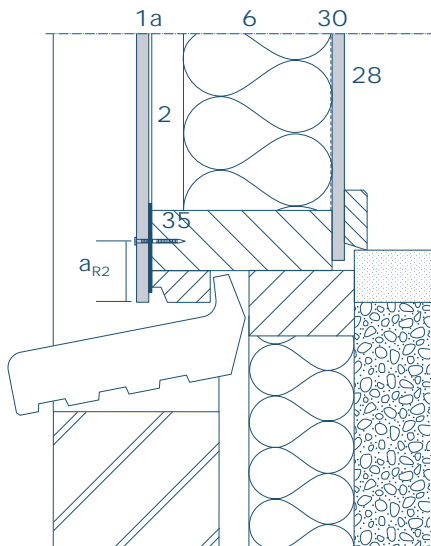
**DURABLE:** Rockpanel panels for general applications.

**XTREME:** Rockpanel panels specially developed for applications where greater strength is required and suitable for ground level application.

### Coating

Rockpanel Rockclad are finished with a completely water-based system. This system exhibits good UV resistance so that the colours are preserved for a long time. This type of panel is also vapour-permeable so that it can also be used in unventilated applications, such as infilligs and in the renovation of fascias. Consult the "Design conditions for unventilated structures" in the Technical Design Guide and BBA approval.

Optional: Rockpanel Rockclad can be protected with the very durable AG finish.



- 1a Rockpanel panel thickness 6 or 8 mm (Rockpanel Rockclad vapour-permeable)
- 2 Weatherproof joining strip
- 6 Insulation
- 28 Internal lining
- 30 Vapour barrier, f.e. PE foil, at least 0.15 mm thick
- 35 Surface fix fastener
- a<sub>R2</sub> Distance from edge at least 50 mm

### Mechanical fastening system

Rockpanel has developed special mechanical fastening systems for wooden structures whereby the properties of the panel are used to the full.

The Rockpanel stainless steel ring shank nails with heads in the colour of the panel can be applied both manually and with a very easily adjustable special compressed air hammer. The great advantage of this method of fastening is the speed of working and the almost invisible nail heads.

The Rockpanel stainless steel screws have a small head diameter less than 10 mm, so that compared with

conventional screw dimensions they are less visible. Both the shank nails and screw are of stainless steel AISI 316 quality so that they can also be used in a chlorine-rich environment, such as the coast.

For fastening Rockpanel panels to aluminium profiles, rivets as specified under the Rockpanel accessories with a very flat head can be used. When fastening to aluminium the expansion of aluminium in contrast to Rockpanel must be taken into account, consult also the BBA approval for this.

### Adhesive fastening system

In addition to the mechanical fastening method, there is a very durable adhesive system available for the Rockpanel facade cladding: Rockpanel Tack. The system consists of primers for the rear of the panel and the wooden framework, a double-sided adhesive foam strip for temporary fastening and achieving the correct groove section, as well as the solvent-free, very elastic and durable MS-polymer based adhesive. For adhering to aluminium profiles a special primer is available from Simson. When priming with a Rockpanel Rockclad roller the protective film must first be removed. Do not stack panels with wet primer on top of each other.

### Ventilating background structures

For ventilated facades it is recommended to use a cavity depth of at least 28 mm.

If Rockpanel Rockclad is used in unventilated construction, consult "Design conditions for unventilated structures" and the BBA approval.

### Colour fastness/UV resistance

The colour change of various colours is determined in a Xenotest 1200 U artificial weathering apparatus. After 3000 hours of exposure to UV light and intervals of rain, the colour change is determined in accordance with EN 20105-A02 and A03.

The results expressed in grey scale are:

- all standard colours Rockpanel Rockclad 4

### Physical properties

Dimensional stability length/width EN 438-2:

Dimensional stability (m/m°C)  $11 \cdot 10^{-6}$

Dimensional stability per 10% change RH (m/m)  $8 \cdot 10^{-5}$

Water uptake via the sawn edge after 28 days:

at 20°C and 65% RH: < 1,3%

at 2°C and 90% RH: < 0,2%

**Fire properties**

The system is classified Class 0 or "low risk" as defined in the national building regulations

Euroclass according EN13501-1

8mm on sub-construction Wood B-s2-d0

8mm on sub-construction Aluminium B-s1-d0

**Mechanical properties**

Characteristic flexural yield strength in N/mm<sup>2</sup> EN 310 and EN 1058 :f<sub>05</sub> ≥ 27

Bending elasticity module, after statistic N/mm<sup>2</sup> EN 310, E<sub>05</sub> 3380

**Workability**

Rockpanel Rockclad can easily be sawn with tools with a 300 mm Ø 48 tooth tungsten tipped circular saw. For sawing recesses of contours a jigsaw with a toothed blade with tungsten particles can be used (e.g. Bosch type T150 RIFF or AEG type K50:932-213232).

**Storage**

The panels must be stored in a dry place on a flat pallet. Do not place more than 2 pallets on top of each other.

**Rockpanel accessories**

Ring Shank nails: Rockpanel stainless steel AISI 316 ring shank nail 32mm long

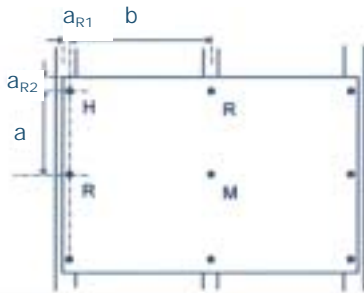
Screws: Rockpanel stainless steel AISI 316 torx screws 35 mm long

Rivets: Aluminium rivets with painted head as specified in the BBA approval

Joint gasket: ■ with low groove  
width 36 mm:  
width 60 mm  
■ EPDM self-adhesive foam gasket  
width 36 mm:  
width 60 mm

Edge paint: Rockpanel edge paint can be used

Adhesive: Rockpanel Tack with double-sided adhesive foam strip and primers for wood and aluminium



Designloads - permissible pull-over strength in N / position of the fixing.

Location of the fastening, a<sub>R1</sub> is the panel edge distance on timber batten

	Max. centre to centre distance fastenings mm		M: middle of the panel		R: edge of the panel a <sub>R1</sub> = 15 mm		H: panel corner a <sub>R1</sub> /a <sub>R2</sub> = 15/50 mm	
	6 (a-b)	8 (a-b)	6	8	6	8	6	8
Panel thickness	6 (a-b)	8 (a-b)	6	8	6	8	6	8
Adhesive [a]	n/a 400	n/a 600	1 N/mm <sup>1</sup>					
Ring shank nail	300-400	400-600	155	190	100	190	85	130
Screw	300-400	600-600	230	330	125	180	75	85
Rivet	300-400	600-600	255	435	150	230	100	115

[UK] Design loads including a safety factor of 3.

[a] : Rockpanel Tack

### Colours

Rockpanel Rockclad is supplied as standard in 16 RAL-colours:

RAL 9010	Pure White
RAL 1013	Oyster White
RAL 9001	Cream White
RAL 1015	Light Ivory
RAL design	060-8030 Soft Peach
RAL design	050-5060 Earth Orange
RAL 3004	Purple Red
RAL 6009	Fir Green
RAL 7035	Light Grey
RAL 7004	Signal Grey
RAL 7031	Blue Grey
RAL 7016	Anthracite Grey
RAL 7021	Black Grey
RAL 9005	Jet Black
RAL 5011	Steel Blue
RAL 8028	Terra Brown

Also 84 special RAL- Design colours are available at 100m<sup>2</sup>. All other RAL/NCS colours are available at 200m<sup>2</sup>.

### Maintenance

Rockpanel Rockclad can be cleaned with a 'car shampoo' or an 'all-purpose cleaner' in the solution indicated on the pack. Do not use solvents on Rockpanel Rockclad.

### Suppliers

All Rockpanel distributors.

All accessories such as screws, nails, adhesive, joining strip, profiles etc can be ordered via the Rockpanel distributors. Edge paints via Plastestrip Profiles (tel: 0172674771) .

### Distribution

Rockpanel Rockclad can be obtained from the Rockpanel distributors in the UK.

### Reports

Rockpanel Rockclad Durable is approved in accordance with BBA approval Agrément certificate No O4/4168.

### United Kingdom

Rockwool Rockpanel B.V.

Wern Tarw, Pencoed,

Bridgend CF35 6NY

Phone 01656 - 86 32 10

Fax 01656 - 86 36 11

E-mail [info@rockpanel.co.uk](mailto:info@rockpanel.co.uk)

[www.rockpanel.co.uk](http://www.rockpanel.co.uk)

January 2006 edition. All previous publications are hereby superseded. Subject to amendment. All details are intended as general information about our products and their application possibilities and are not intended as a guarantee of particular properties of these products. No rights can therefore be derived from the contents of this edition. © 2006