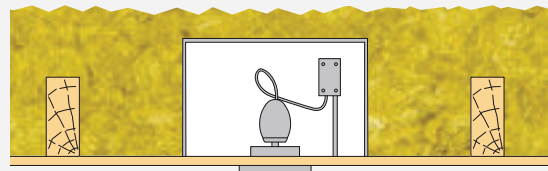


RockCover

Light fittings which penetrate the ceiling, such as recessed spotlights and down-lighters, should not be directly overlaid with thermal insulation.

Rockwool RockCover is manufactured from non-combustible Rockwool insulation and is intended to act as a thermal cover to minimise heat loss from the room below, whilst allowing the heat generated by the light to dissipate into the air void within the cover. This heat is then control vented into the ceiling void through the holes in the lid.



Indicative Dimensions:

External Height = 200 mm

Internal Height = 180mm

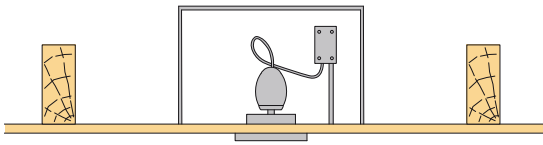
Internal Diameter = 150mm

External Diameter = 190mm

Fitting Instructions

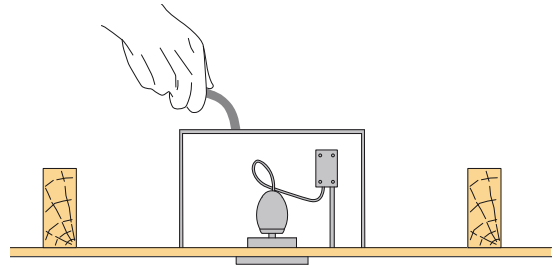
Step 1

Place RockCover centred above the light to maintain a clearance of 75mm.



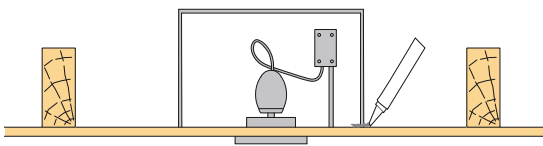
Step 2

Pass the cable through the top of RockCover and wire light as normal.



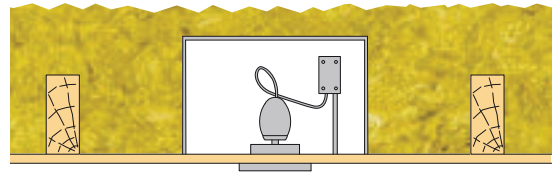
Step 3

If required, seal around base of RockCover with suitable mastic to ensure air tightness.



Step 4

Place loft insulation over RockCover to the required level of insulation.



For further technical information,
please contact Rockwool
Technical Department.

Rockwool Limited

www.rockwool.co.uk
Tel: 0871 222 1780

www.rockwool.ie
Tel: +353 1 891 1056