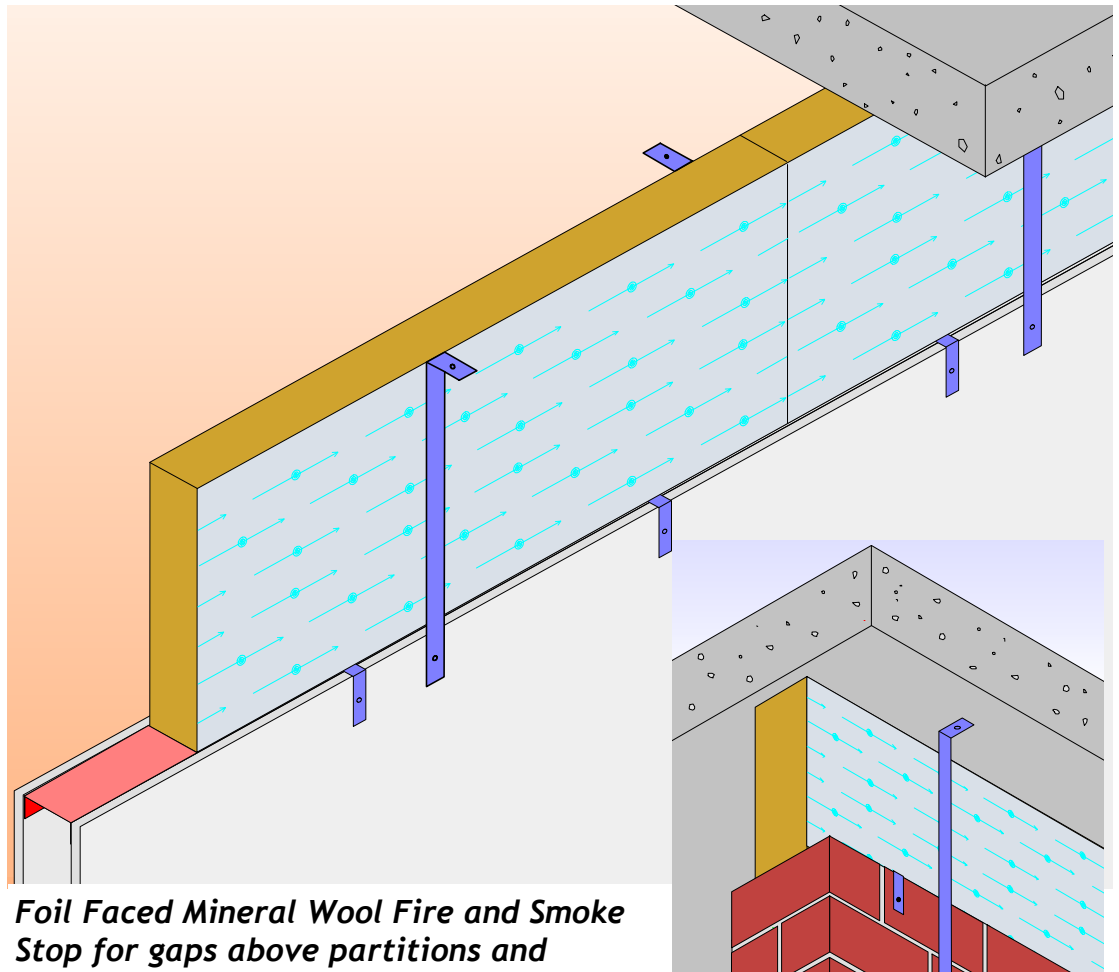


AIM PARTITION HEAD BARRIER

December 2003



Foil Faced Mineral Wool Fire and Smoke Stop for gaps above partitions and masonry walls.

- ~ **Lengths: 1200mm**
- ~ **Voids: 100 - 600mm (Less than 100mm use AIM Fire Stop Strip)**
- ~ **No Intumescent required**

Introduction

AIM Partition Head Barrier is made from foil faced high density rock wool and provides a fire barrier above fire rated metal frame partitions, fire rated timber partitions and masonry walls.

In a fire situation a partition may bow appreciably due to the heat of the fire on one side with the result that the partition head may move laterally to a significant degree. AIM Partition Head Barrier is supplied with a clip system to prevent the possibility of it being dislodged and therefore ineffective in a fire situation. For voids over 250mm link straps are supplied in addition to clips in order to restrain lateral movement of the partition head.

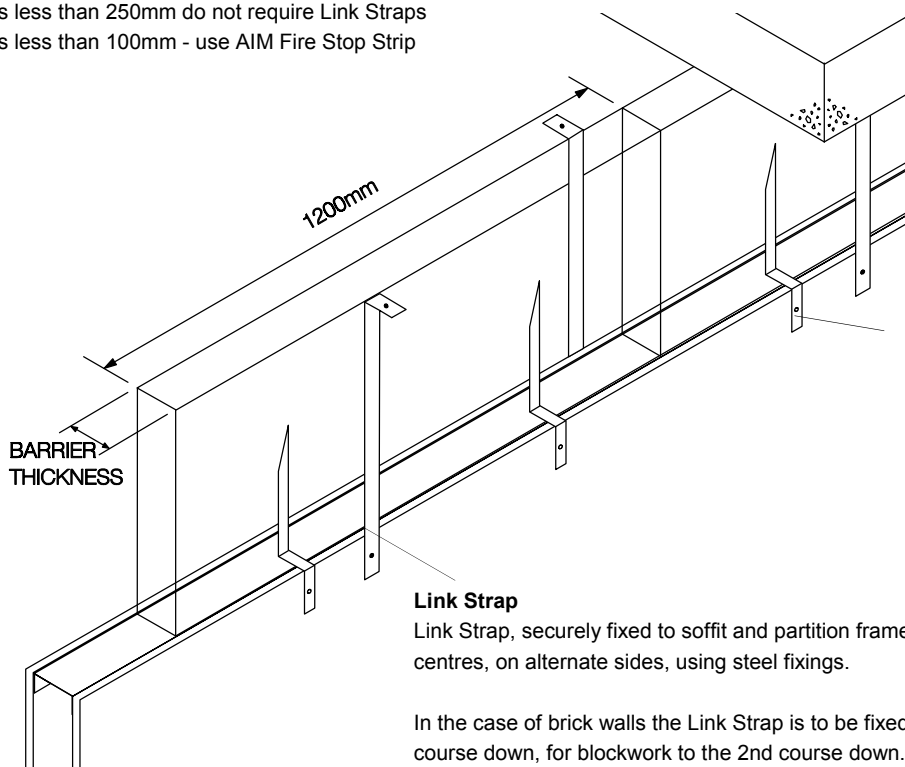
Partition Head Barrier is used where the gap is greater than 100mm, for gaps 100mm or less, use AIM Fire Stop Strip.

AIM PARTITION HEAD BARRIER

Detail shows a void greater than 250mm.

Voids less than 250mm do not require Link Straps

Voids less than 100mm - use AIM Fire Stop Strip



Partition Head Barrier to be compressed by about 5%, between top of partition and soffit.

Clip
Steel clip, fixed through the plasterboard to the top channel or timber, using steel fixings. (In the case of masonry partitions the clip is to be fixed to the top brick or block.)

Link Strap
Link Strap, securely fixed to soffit and partition frame at 600mm centres, on alternate sides, using steel fixings.

In the case of brick walls the Link Strap is to be fixed to the 3rd course down, for blockwork to the 2nd course down.

Link Strap is to be manufactured from zinc coated steel strip 50mm wide. The Link Strap thickness is to be 1.6mm for voids up to 450mm, and is to be 2mm for voids 450mm - 600mm.

Installation

Two clips are inserted into the base of each 1200mm length of AIM Partition Head Barrier. The barrier is push fitted into place and it must fit tightly and completely; the clips are then screwed to the top of the partition or wall.

The Barrier must be compressed by about 5% when installed. The maximum void size is 600mm. Where the gap exceeds 250mm, the top of the partition or wall must be securely fixed, by steel fixings, to the soffit at 600mm centres, using steel link straps (see diagram).

Fire Resistance

The performance of AIM Partition Head Barrier has been tested to BS 476 part 20 and assessed by Warrington Fire Research Centre to achieve the values stated below.

Fire Resistance	Minimum Thickness of Fire Barrier mm	
	Gaps <301mm	Gaps <601mm
Minutes		
30	50	75
60	75	100
120	100	100 with lap joint
240	100 EHD*	100 EHD*

*EHD = Extra high density barrier with lap joints

Thickness is measured as the distance between one compartment and the next, which the fire stop or barrier is separating. AIM Partition Head Barrier is incombustible to BS 476 part 4, rated Class 1 Surface Spread of Flame to BS 476 part 7 and complies with the performance requirements of Class O of the Building Regulations

Handling & Storage

AIM rock wool products are easy to handle, but should be treated with relative care to ensure their integrity and shape is maintained. They should be stored in fairly dry conditions. Should indoor storage be impossible the product should be stacked clear of the ground and covered with a stout tarpaulin.

AIM Ltd assume no responsibility for errors in, or misinterpretations of, the information contained in this leaflet or in its use. AIM Ltd operate a policy of continual product development and reserve the right to amend or alter the specification in this publication without notice. This leaflet does not constitute a representation or warranty of sale. © Copyright AIM Ltd December 2003