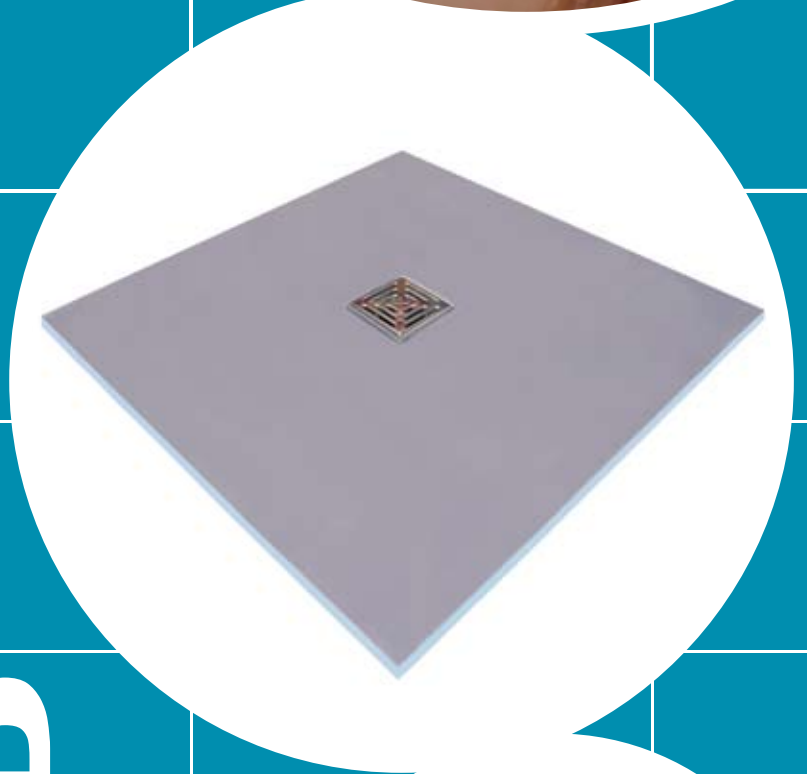


# Introduction

The Marmox Showerlay is designed for shower and wet room applications where clients wish to specify their own design tile finish. It is a floor level, barrier-free shower panel ready to receive a surface finish of tiles to suit client's requirement. It is already pre-laid to falls at 2% minimum. The underlay is made of a tough, lightweight and waterproof extruded polystyrene core. It is surfaced with an impact resistant glass fibre reinforced polymer cement finish, compatible with most tile adhesives. A thin stainless steel sheet is fixed on the base surrounding the outlet hole.

# SHOWERLAY BOARD



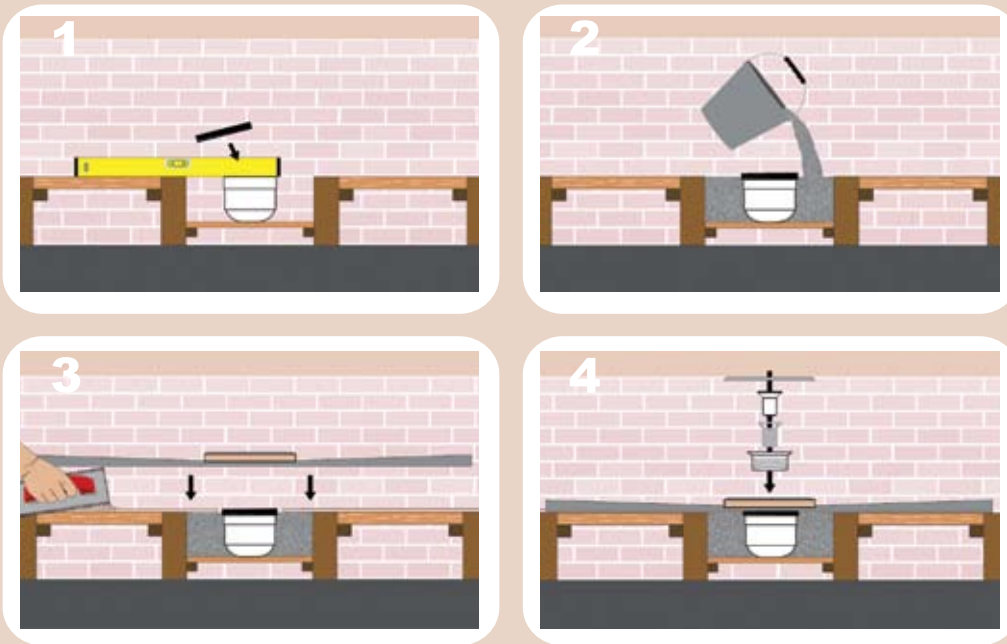
# PRODUCT INFORMATION

The Marmox Showerlay is ideal for wet rooms and shower construction. The Showerlay can be easily cut to fit the shower area or to produce an irregular or circular shower base. Unlike some other underlays, the Marmox Showerlay is sufficiently robust to allow mosaic tiles to be laid on it without the risk of compression through point loading. The Showerlay is compatible with Marmox / Dallmer Shower Drains.

## ADVANTAGES

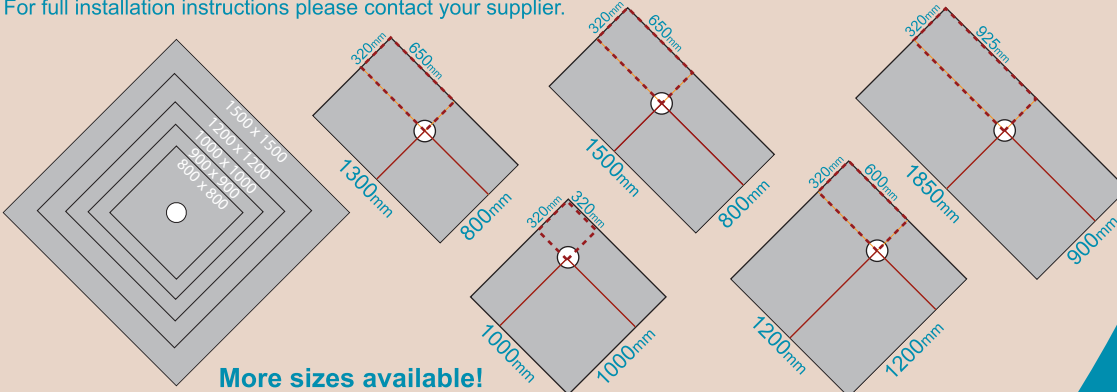
- **PRE-LAID TO FALLS (MIN 2% DRAIN ANGLE)**
- **AVAILABLE WITH CORNER OR CENTRAL DRAIN**
- **CAN BE USED TO CREATE A 'WET ROOM' OR SHOWER AREA**
- **LIGHTWEIGHT (FROM AS LITTLE AS 3.50 KG)**
- **CAN BE FINISHED WITH TILES OR SHEET SYSTEMS**
- **EASY ACCESS, FLOOR LEVEL**
- **CAN BE CUT TO FIT ON SITE**
- **PREFORMED (NO SKILLED LAYING OF FALLS)**
- **CAN BE FIXED TO TIMBER OR CONCRETE FLOORS**

## HOW TO USE



For full installation instructions please contact your supplier.

## SIZES



Disclaimer: The typical data shown in this leaflet is intended as a general guide and is based on tests carried out under controlled conditions.

**marmox UK Ltd**  
 Unit 3 Forward Way, Laker Rd, Rochester, Kent, ME1 3QX, UK  
 Tel: 01634 862277 Fax: 01634 864223 www.marmox.com  
 E-mail: info@marmox.com

## OFFSET DRAIN

Weight (Kg/Board)	5.00	5.20	6.00	7.00	8.50
Perimeter Height (mm)	20	20	24	20	27
Size (mm)	1000 x 1000	1300 x 800	1500 x 800	1200 x 1200	1850 x 900

## CENTRE DRAIN

Weight (Kg/Board)	3.50	4.20	5.00	7.00	10.50
Perimeter Height (mm)	20	20	20	20	24
Size (mm)	800 x 800	900 x 900	1000 x 1000	1200 x 1200	1500 x 1500

## TECHNICAL PROPERTIES

- Compressive Strength (ASTM C579) = 0.3N/mm<sup>2</sup>
- Density = XPS core: 36 kg/cm<sup>3</sup>  
Polymer cement layers, approx weight 2.73 kg/m<sup>2</sup> per face
- Fire Rating (DIN 4102) = Class O (BS 476 parts 6 and 7)