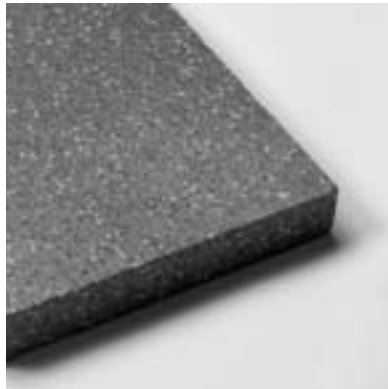


jablo

Low Lambda Expanded Polystyrene Insulation

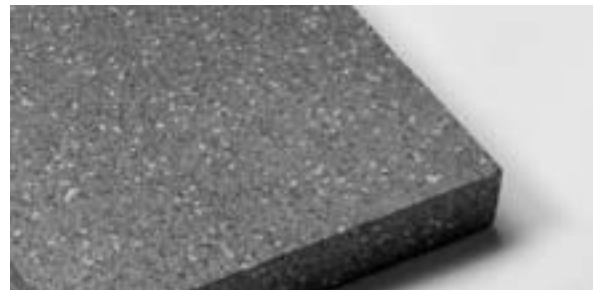


Vencel Resil

Market leaders in the manufacture of Expanded Polystyrene (EPS) since 1973, is pleased to present in this brochure the next generation of Jablite insulation.

The improved thermal performance of Jablo is intended to give the designer more freedom in design construction whilst retaining all the attributes of EPS which has been successfully used to insulate all types of buildings for many years.

The unique colouring of Jablo also gives the specifier and contractor the assurances that the material being used on site is the material that was intended at design stage, and therefore that performance can be guaranteed.



jablo

Jablo Low Lambda EPS is a lightweight cellular plastic material suitable for a whole range of applications. It is an excellent insulating medium which exhibits consistent thermal performance over the range of temperatures normally encountered in buildings. Jablo offers enhanced thermal performance up to 20% of that of traditional insulants.



PRODUCT INFORMATION

- Improved thermal performance up to 20%
- Jablo is produced to the requirements of BS EN 13163
- Jablo is available as Reaction to Fire Class E, containing a flame-retardant additive
- Jablo is supplied in board sizes and thickness to suit particular requirements
- The product is easy to handle and work with on site and can easily be cut to fit over any piping where necessary
- A suitable damp-proof membrane or vapour control layer will be required in most forms of construction
- Jablo is non-toxic and biologically inert and will remain durable for the life of the building
- Jablo requires no specialist trades or equipment for installation

jablo flooring

Conversion table PUR to Jablo flooring

Use the conversion table to compare the Lambda values of polyurethane to Jablo flooring.

Example: To obtain the Jablo flooring equivalent of 65mm insulation board with a Lambda value of 0.026 W/mK the calculation is as follows:

65 (The thickness of the insulation) x 1.15 (The Lambda value conversion factor from the table) = 74.

Therefore, Jablo flooring rounded up to the nearest thickness would be 75mm thick.

N.B. Jablo flooring is available in the following thickness (mm): 25, 40, 50, 60, 75, 100, 120. Should you require written confirmation please do not hesitate to contact our Technical Department on: 0870 444 8769 or email: technical@vencel.co.uk

Other insulation Lambda value W/mK	Jablo flooring
0.018	1.67
0.019	1.58
0.020	1.50
0.021	1.43
0.022	1.36
0.023	1.30
0.024	1.25
0.025	1.20
0.026	1.15
0.027	1.11
0.028	1.07
0.029	1.03
0.030	1.00

Product

Jablo flooring can be used below or above a concrete ground supported floor slab or above a suspended ground floor slab, comprising concrete beams and dense or lightweight blocks, to satisfy the Building Regulation U-value requirements of Approved Documents L1 and L2. Used above the slab Jablo flooring can have a screed or chipboard finish.

Description

Jablo flooring for dwellings - L1 is EPS 70 as defined in BS EN 13163. Jablo flooring contains a flame retardant additive.

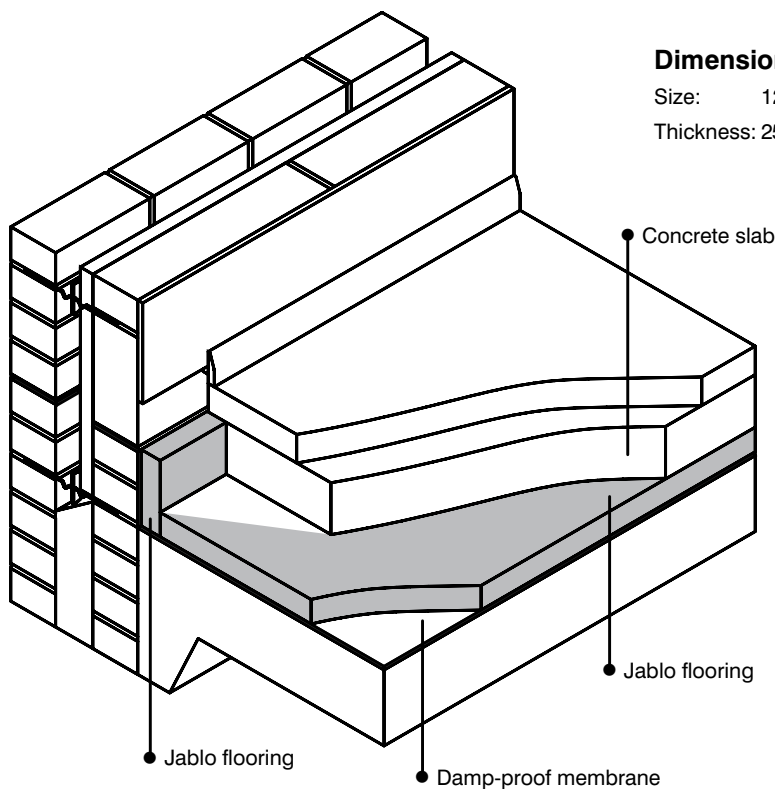
Approvals

Jablo flooring has been assessed and approved by the BBA, Certificate number 87/1796.

Dimensions

Size: 1200 x 2400mm

Thickness: 25, 40, 50, 60, 75, 100 & 120mm



jablo flooring

U-values calculated in accordance with BS EN ISO 13370

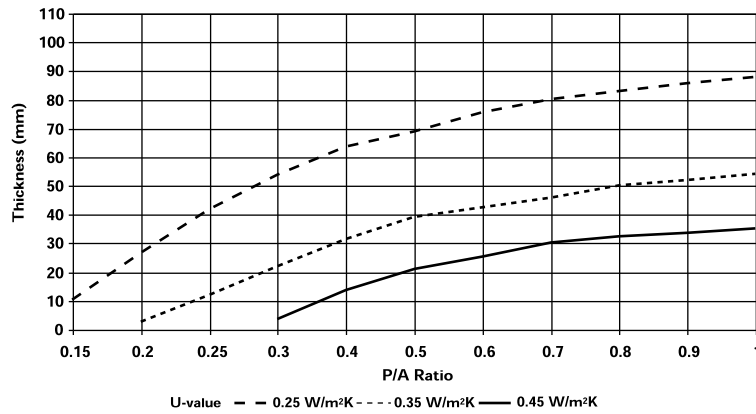
The rate of heat loss through a ground floor varies on its shape and size. Approved document L1 requires the exposed perimeter length 'P' and the floor area 'A' to be calculated to obtain a P/A Ratio.

The measurement of both the floor area and perimeter should be made on the internal finished surface of the walls enclosing the heated space. For buildings such as flats and apartments the measurement should be taken over the total gross ground floor area.

Ground supported floor slab

Graph 1 shows the required thickness of Jablo flooring to achieve U-values of 0.25, 0.35 and 0.45 W/m²K given a P/A Ratio to satisfy the requirements of L1.

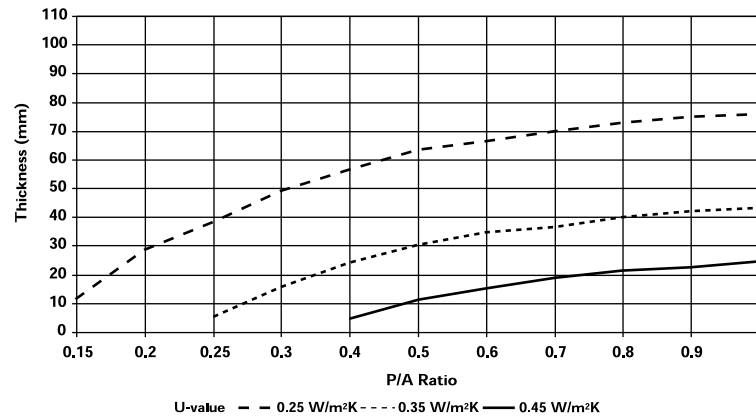
Graph 1 Jablo flooring - L1



Suspended floor slab – dense concrete blocks

Graph 2 shows the required thickness of Jablo flooring to achieve U-values of 0.25, 0.35 and 0.45 W/m²K given a P/A ratio to satisfy the requirements of L1.

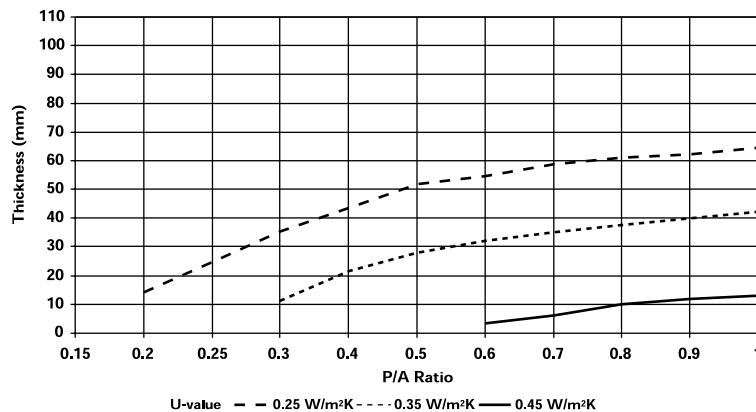
Graph 2 Jablo flooring - L1



Suspended floor slab – insulating blocks

Graph 3 shows the required thickness of Jablo flooring to achieve U-values of 0.25, 0.35 and 0.45 W/m²K given a P/A ratio to satisfy the requirements of L1.

Graph 3 Jablo flooring - L1



jablo cavity

JABLO CAVITY WALL INSULATION satisfies Part L of the Building Regulations and can easily be cut to length on-site using a sharp trowel or knife, allowing for rapid installation and a job well done. And as Jablo cavity is totally rot-proof, you can simply fit it in and forget it.

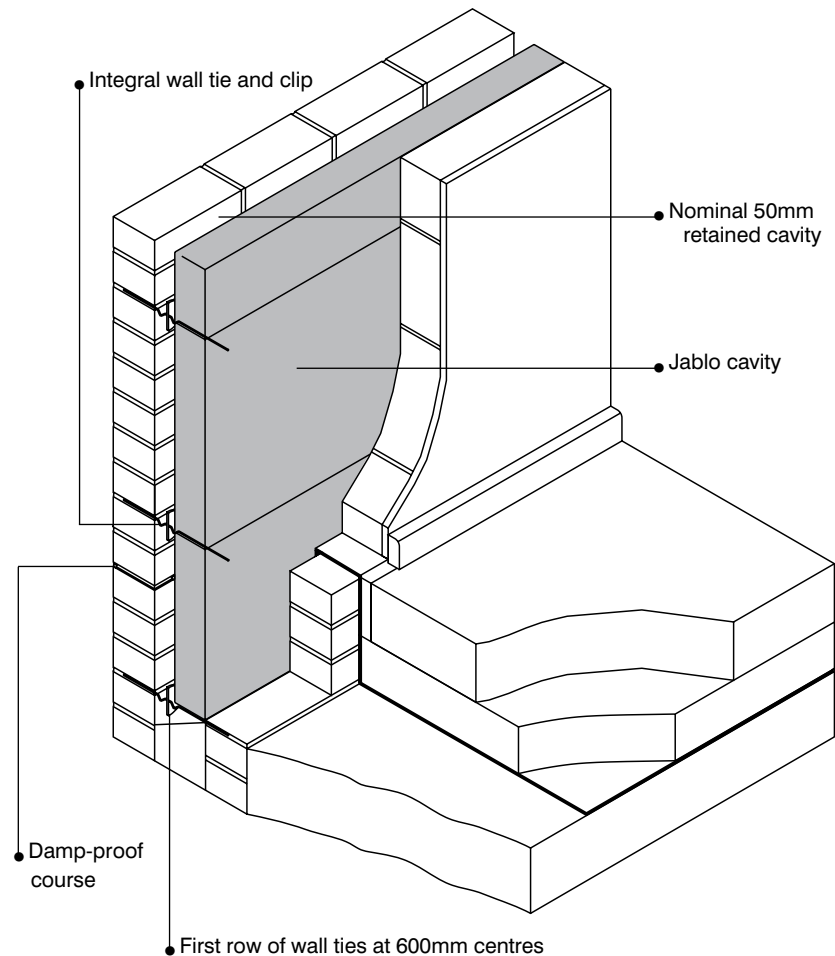
Product

Jablo cavity is a partial-fill, cavity-wall insulation system, designed to be incorporated into new masonry walls during construction to satisfy the Building Regulations U-value requirements. It offers low thermal transmittance and depending primarily on the block chosen for the construction of the inner leaf, 75mm Jablo cavity will typically improve the U-value of a cavity wall to $0.30\text{W/m}^2\text{K}$.

Dimensions

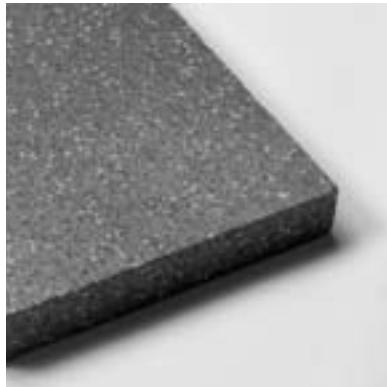
Size: 1200 x 450mm

Thickness: 40, 50, 60 and 75mm



jablo

Low Lambda Expanded Polystyrene Insulation



Vencel Resil Limited

Head Office: Infinity House, Anderson Way, Belvedere, Kent DA17 6BG Tel: 020 8320 9100 Fax: 020 8320 9110

Technical Services: Tel: 0870 444 8769 Fax: 020 8320 9142 Email: technical@vencel.co.uk

Sales Office: Boothferry Works, Howden, Nr Goole, East Riding of Yorkshire DN14 7EA Tel: 0870 600 3666 Fax: 0870 600 2555
Email: sales@vencel.co.uk

www.jablite.co.uk



A SYNBERA GROUP COMPANY