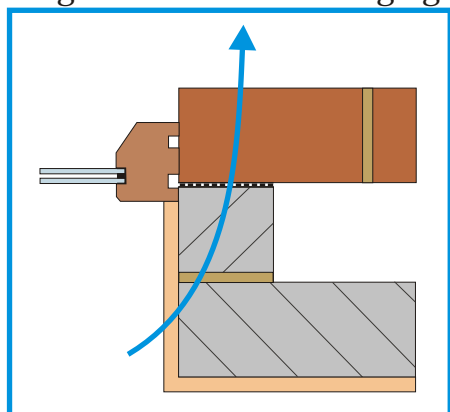


Insulated Cavity Closers

Collecta's range of proprietary cavity closers eliminate cold bridging around window and door openings, ensuring compliance with the Building Regulations. Each type of UNICLOSER XCC incorporates a high performance extruded polystyrene thermal core and at least one rigid dpc profile. Six standard sizes are available to suit different cavity widths and nine different profile configurations suit specific design details.

PROBLEMS!

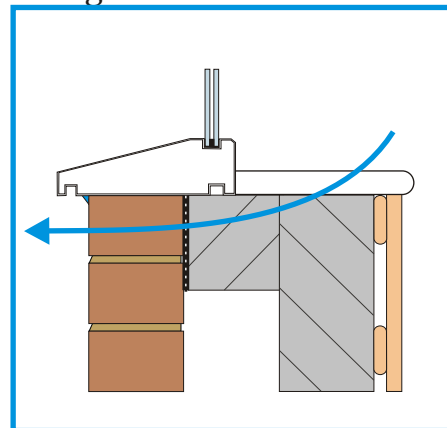
Labour intensive
High risk of thermal bridging



Untidy returns
Possible dpc movement



High block waste
High risk of condensation



SOLUTION = XCC



BENEFITS OF COLLECTA CAVITY CLOSERS

Environmentally friendly
UNICLOSER XCC's insulation core is produced without the use of CFC or HCFC blowing agents and is fully recyclable.

Eliminates cold bridging
The excellent thermal characteristics of UNICLOSER XCC eliminate cold bridging, thus reducing heat loss around window and door openings, saving money and reducing pollution.

Effective dpc
UNICLOSER XCC incorporates an effective damp proof course, which can be used for both vertical and horizontal applications.

Flexible applications
UNICLOSER XCC is offered in six standard widths (A) and nine different profile configurations, with either one or two rigid U-PVC damp proof courses.

No need to return blockwork
Installing UNICLOSER XCC proprietary cavity closers eliminates the need to return the blockwork, saving time as well as improving build quality.

Compatible with all types of cavity insulation
UNICLOSER XCC can be used in conjunction with all types of full and partial fill cavity wall insulation, but the use of *Collecta's* XWL is recommended.

User friendly
UNICLOSER XCC is a rigid, lightweight product which can be easily cut to size using a fine tooth saw. UNICLOSER XCC's insulation core is made from extruded polystyrene, which when cut produces no irritant dust particles or fumes.

Quick and easy to install
UNICLOSER XCC can either be fixed to the frame prior to installation, built into the wall during construction, or mechanically fixed once the wall has been constructed using the universal fixings supplied.

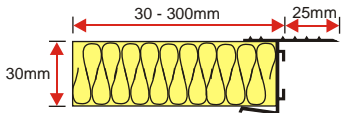
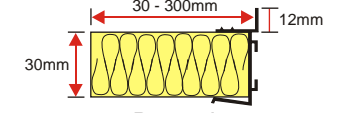
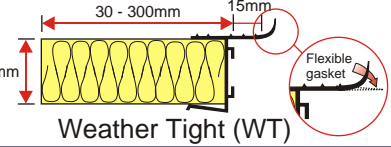
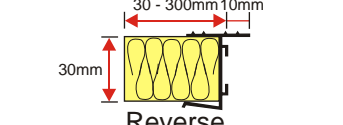
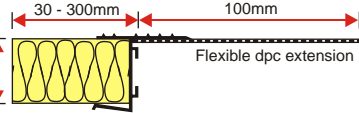
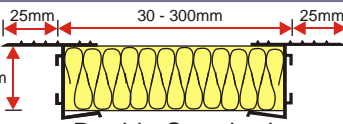
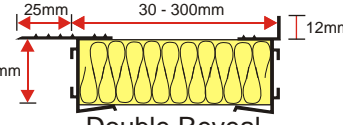
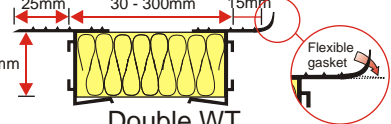
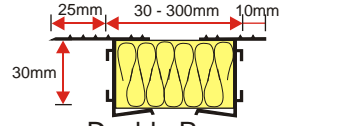
Closer accepts plaster
UNICLOSER XCC's unique waffled surface is an ideal key to which wet plaster or render finish will adhere.

Independent certification
UNICLOSER XCC cavity closers have been awarded BRE Certificate No 047/97, confirming their suitability as a thermal and damp proof barrier. XCCs are also NHBC accepted.



Proven solution
To date, over 1,000,000Lm of XCC has been successfully installed in both domestic and commercial buildings.

Closer Selector

Profile detail	Number of dpc profiles	Standard (A) widths(mm)	Standard length(mm)	Installation method		
				Fixed to the frame and built in	Built in	Retro fitted
 <p>Standard</p>	One	50, 65, 75, 85, 90, 100 (Other sizes manufactured to order 30mm - 300mm)	2500 (Can be supplied cut to size in window sets)	●	●	●
 <p>Reveal</p>	One	50, 65, 75, 85, 90, 100 (Other sizes manufactured to order 30mm - 300mm)	2500 (Can be supplied cut to size in window sets)		●	●
 <p>Weather Tight (WT)</p>	One	50, 65, 75, 85, 90, 100 (Other sizes manufactured to order 30mm - 300mm)	2500 (Can be supplied cut to size in window sets)		●	●
 <p>Reverse</p>	One	50, 65, 75, 85, 90, 100 (Other sizes manufactured to order 30mm-300mm)	2500 (Can be supplied cut to size in window sets)	●	●	●
 <p>Super</p>	One	50, 65, 75, 85, 90, 100 (Other sizes manufactured to order 30mm-300mm)	2500		●	●
 <p>Double Standard</p>	Two	50, 65, 75, 85, 90, 100 (Other sizes manufactured to order 30mm-300mm)	2500 (Can be supplied cut to size in window sets)	●	●	●
 <p>Double Reveal</p>	Two	50, 65, 75, 85, 90, 100 (Other sizes manufactured to order 30mm-300mm)	2500 (Can be supplied cut to size in window sets)		●	●
 <p>Double WT</p>	Two	50, 65, 75, 85, 90, 100 (Other sizes manufactured to order 30mm-300mm)	2500 (Can be supplied cut to size in window sets)		●	●
 <p>Double Reverse</p>	Two	50, 65, 75, 85, 90, 100 (Other sizes manufactured to order 30-300mm)	2500 (Can be supplied cut to size in window sets)	●	●	●

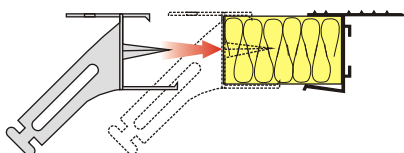
Fixings



For X Spec information and full technical specification, please refer to page 40.

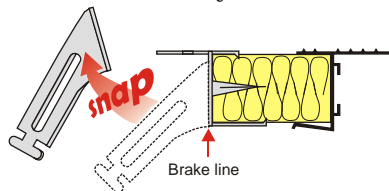
BUILDING THE CLOSER IN

As the wall is raised, simply push the universal fixing into the closer's insulation core at 225mm intervals around door openings and 450mm intervals around window openings and bed into the mortar joints.



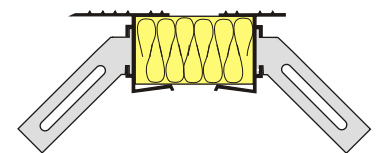
RETRO FIT

If the wall has already been constructed, simply snap the leg off the universal fixing and push the remaining bracket into the closer's insulation core at <450mm intervals. Push the closer into the cavity and secure with masonry nails.

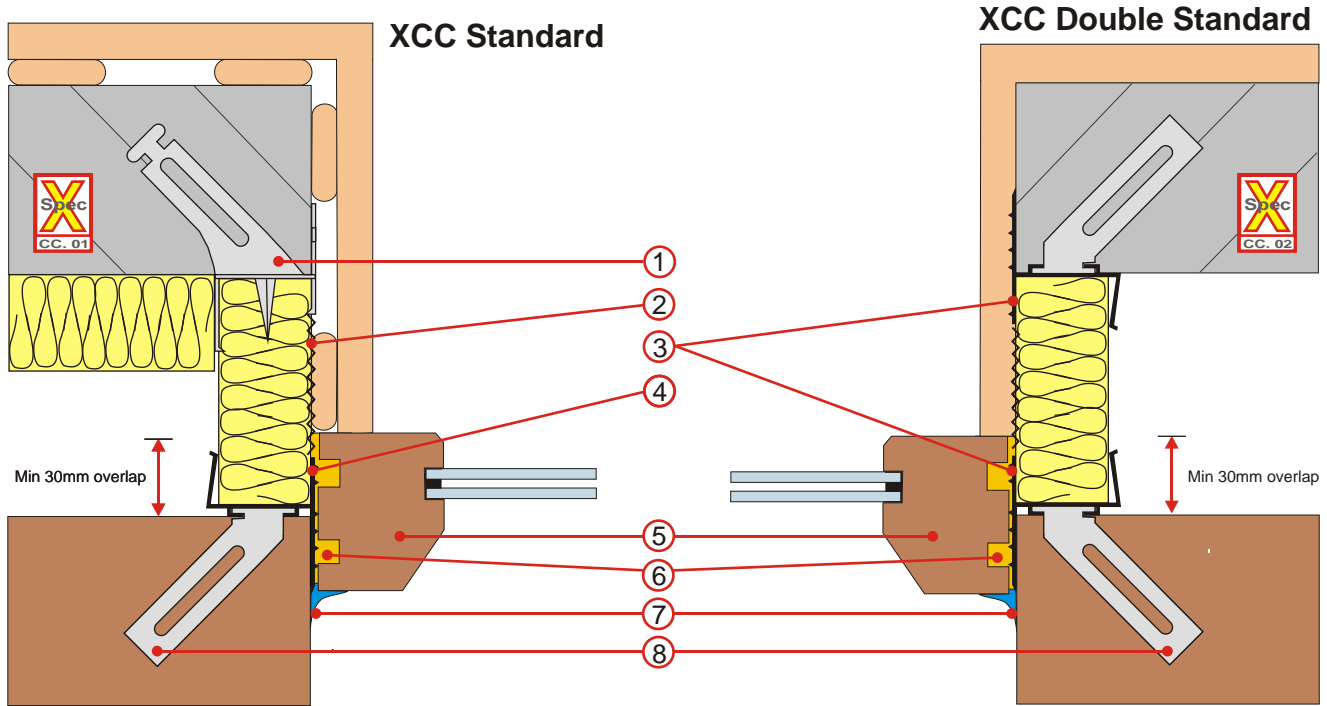


BUILDING THE CLOSER IN USING XCC WALL TIES

Each XCC Double comes complete with twelve wall ties which are simply clipped into the closer's track at 225mm intervals around door openings and 450mm intervals around window openings and bedded into the mortar joints.

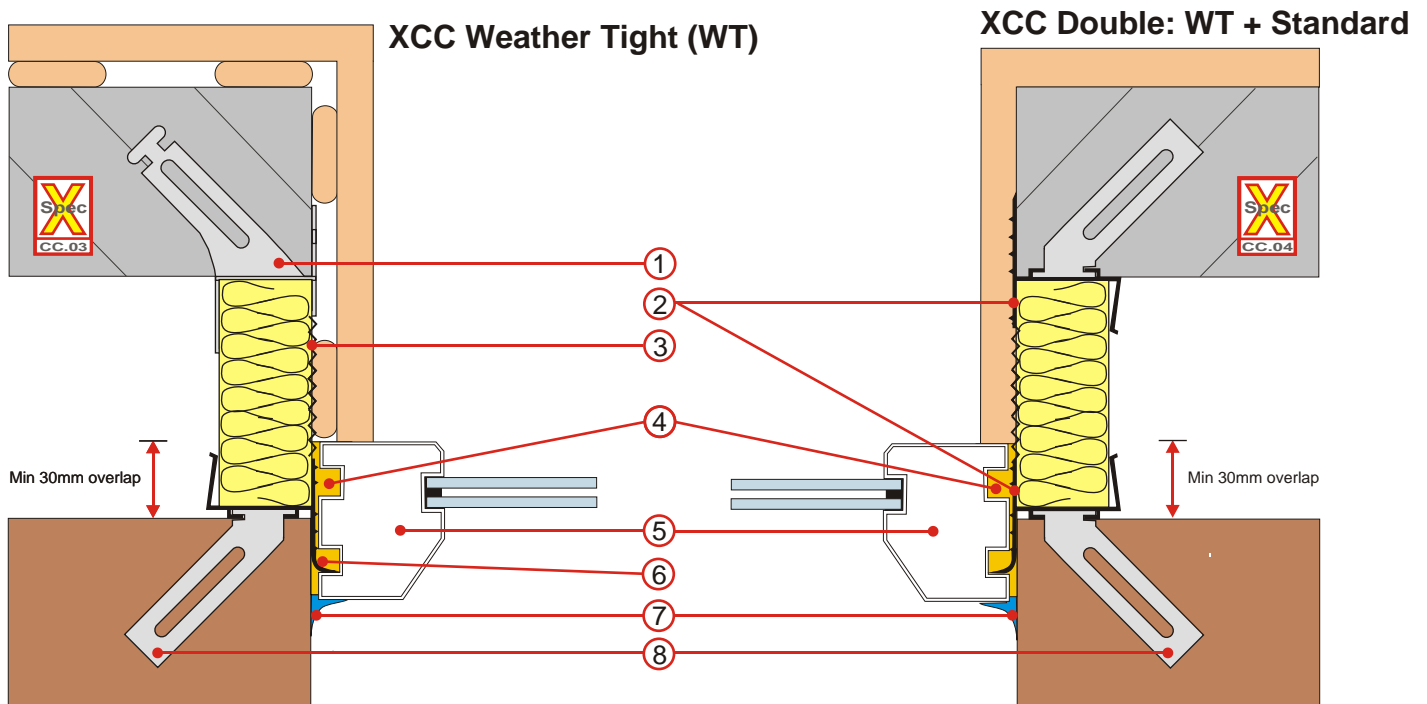


Application: *Cavity closer (vertical jamb)*
 Frame position: *Bridging the cavity by >30mm*



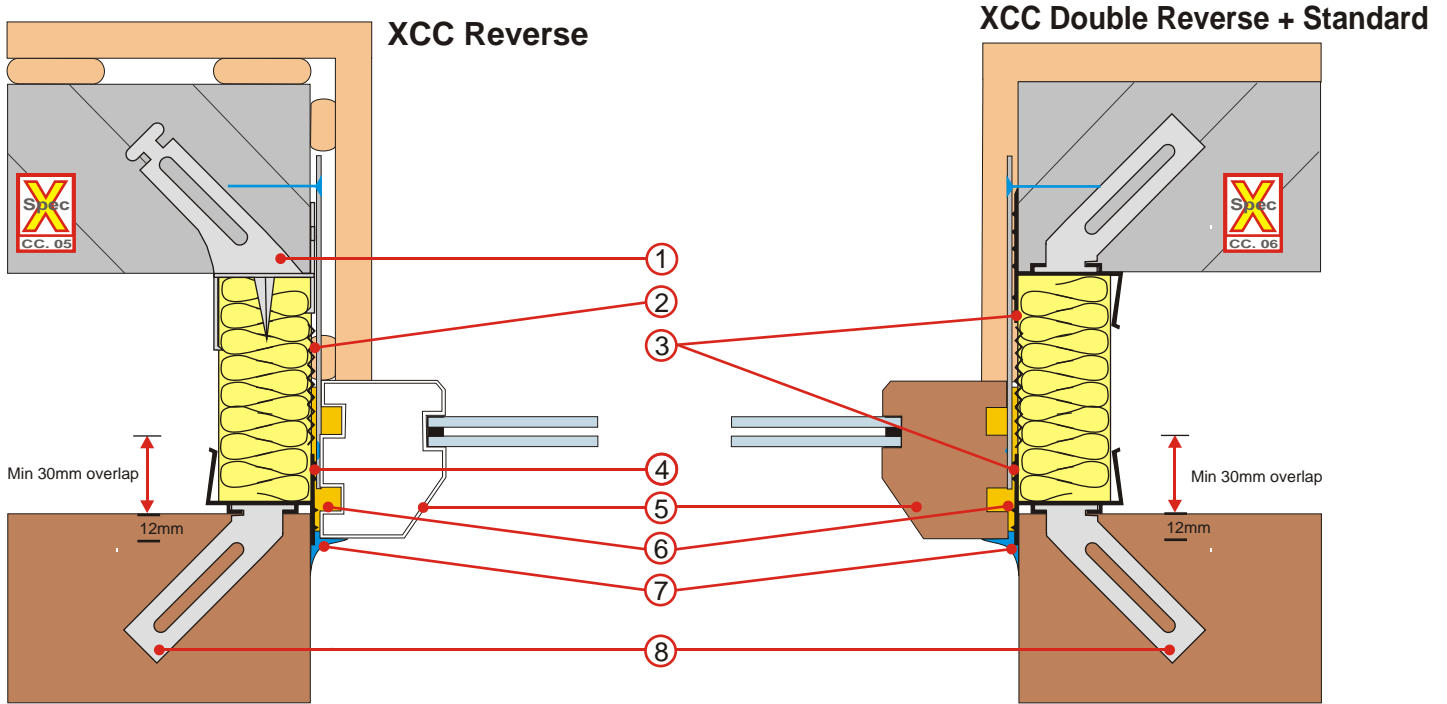
- | | |
|--|--|
| ① XCC universal fixing (supplied with single strip <i>Standard</i>) | ⑤ Wooden window frame (bridging the cavity by min 30mm) |
| ② Waffled surface (key for plaster) | ⑥ Closed-cell expanding gap filler as secondary seal |
| ③ UNICLOSER XCC <i>Double Standard</i> (two rigid profiles) | ⑦ Sealant pointing as primary seal |
| ④ UNICLOSER XCC <i>Standard</i> (one rigid profile) | ⑧ XCC wall tie supplied with double closers (optional with single strip closers) |

Application: *Cavity closer (vertical jamb)*
 Frame position: *Bridging the cavity by >30mm*



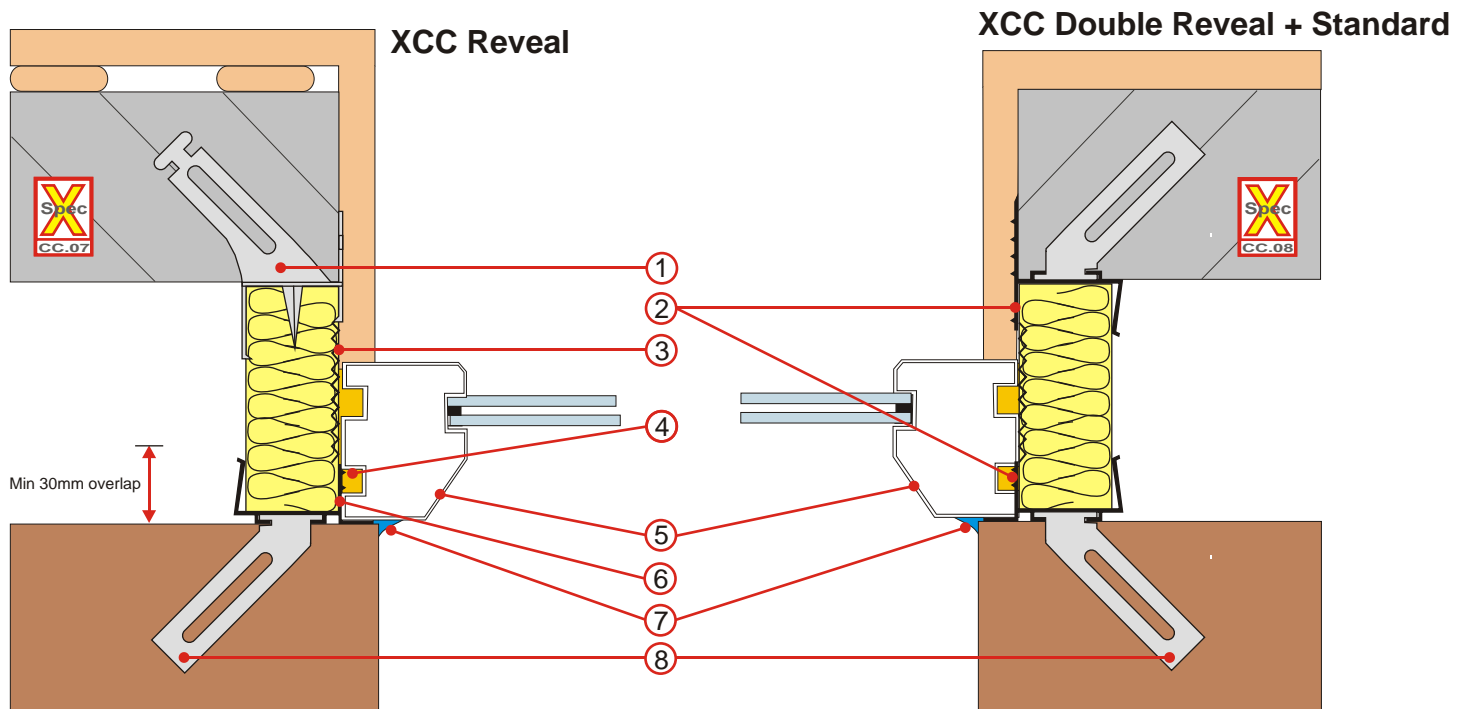
- | | |
|--|---|
| ① XCC universal fixing (supplied with single strip <i>WT</i>) | ⑤ Plastic window frame (bridging the cavity by min 30mm) |
| ② UNICLOSER XCC <i>Double WT+Standard</i> (two rigid profiles) | ⑥ UNICLOSER XCC <i>WT</i> (one rigid profile with flexible flange which acts as secondary seal) |
| ③ Waffled surface (key for plaster) | ⑦ Sealant pointing as primary seal |
| ④ Closed-cell expanding gap filler | ⑧ XCC wall tie supplied with double closers (optional with single strip closers) |

Application: *Cavity closer (vertical jamb)*
 Frame position: *Overhanging facework by only 12mm*



- ① XCC universal fixing (supplied with single strip *Reverse*)
- ② Waffled surface (key for plaster)
- ③ UNICLOSER XCC *Reverse + Standard* (two rigid profiles)
- ④ UNICLOSER XCC *Reverse* (one rigid profile)
- ⑤ Wooden window frame (overhanging facework by 12mm)
- ⑥ Closed-cell expanding gap filler as secondary seal
- ⑦ Sealant pointing as primary seal
- ⑧ XCC wall tie supplied with double closers (optional with single strip closers)

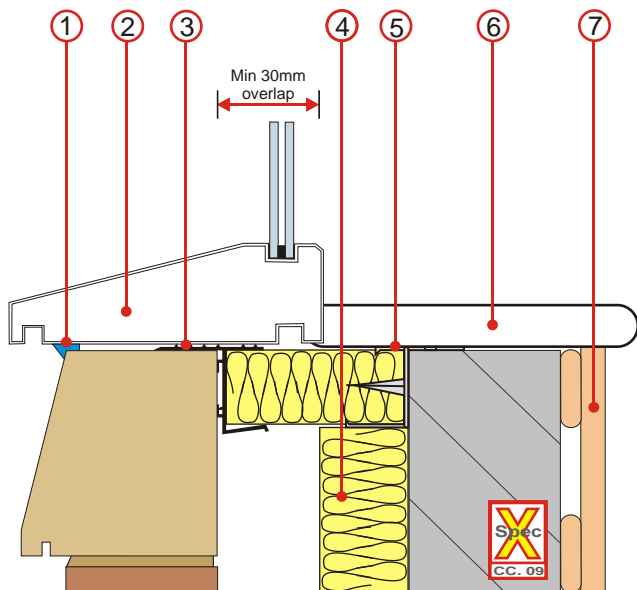
Application: *Cavity closer (vertical jamb)*
 Frame position: *In checked reveal*



- ① XCC universal fixing (supplied with single strip *Reveal*)
- ② UNICLOSER XCC *Double Reveal + Standard* (two rigid profiles)
- ③ Waffled surface (key for plaster)
- ④ Closed-cell expanding gap filler
- ⑤ Plastic window frame (set into checked reveal)
- ⑥ UNICLOSER XCC *Reveal* (one rigid profile)
- ⑦ Sealant pointing as primary seal
- ⑧ XCC wall tie supplied with double closers (optional with single strip closers)

Application: *Cavity closer (Sill detail)*
 Frame position: *Bridging the cavity by >30mm*

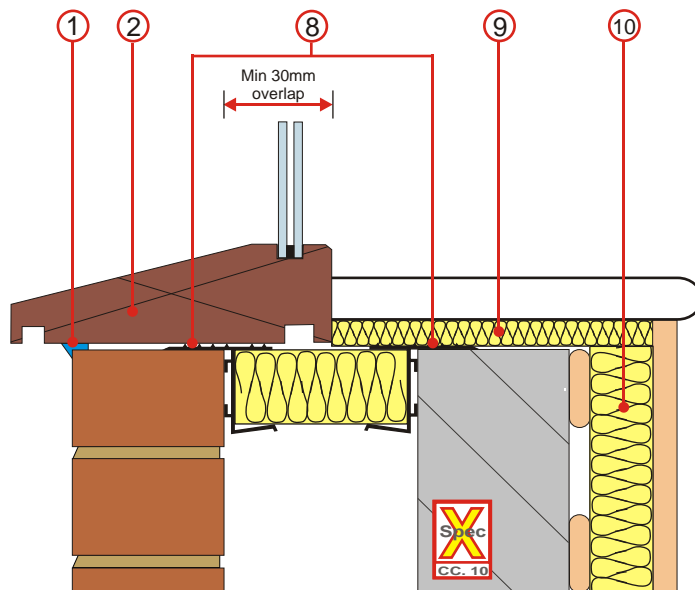
Partial fill cavity insulation and dry lined



- ① Sealant pointing as primary seal
- ② Window frame (bridging the cavity by min 30mm)
- ③ UNICLOSER XCC *Standard* (one rigid profile)
- ④ XWL partial fill cavity wall insulation

- ⑤ XCC universal fixing (supplied with single strip *Standard*)
- ⑥ Window sill
- ⑦ Plasterboard on dabs
- ⑧ UNICLOSER XCC *Double Standard* (two rigid profiles)

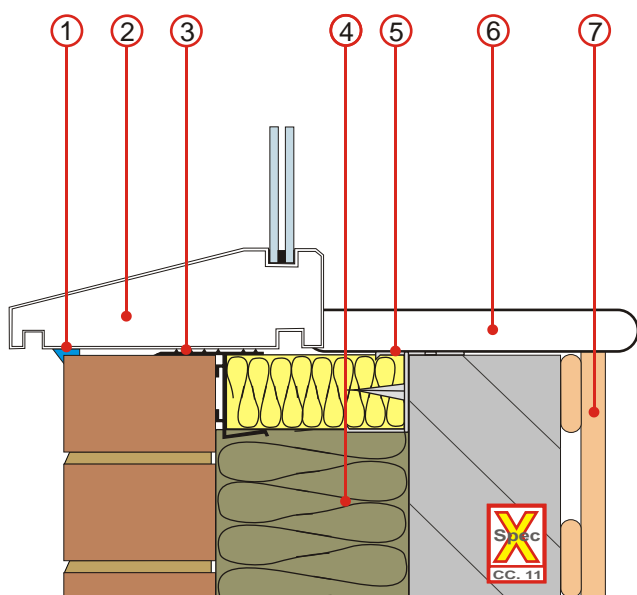
Plasterboard laminate



- ⑨ Strip of 20mm thick X2i insulation
- ⑩ XGY plasterboard/insulation laminate

Application: *Cavity closer (Sill detail)*
 Window/door position: *Bridging the cavity by >30mm*

Full fill cavity insulation and dry lined



- ① Sealant pointing as primary seal
- ② Plastic window frame (set back minimum 30mm)
- ③ UNICLOSER XCC *Standard* (one rigid profile)
- ④ Full fill cavity wall insulation

- ⑤ XCC universal fixing (supplied with single strip *Standard*)
- ⑥ Window sill
- ⑦ Plasterboard on dabs



Specification reference number

To specify UNICLOSER XCC, log onto www.collecta.co.uk/clauses and use the X Spec reference number to select the application, then simply copy and paste the specification into your document.