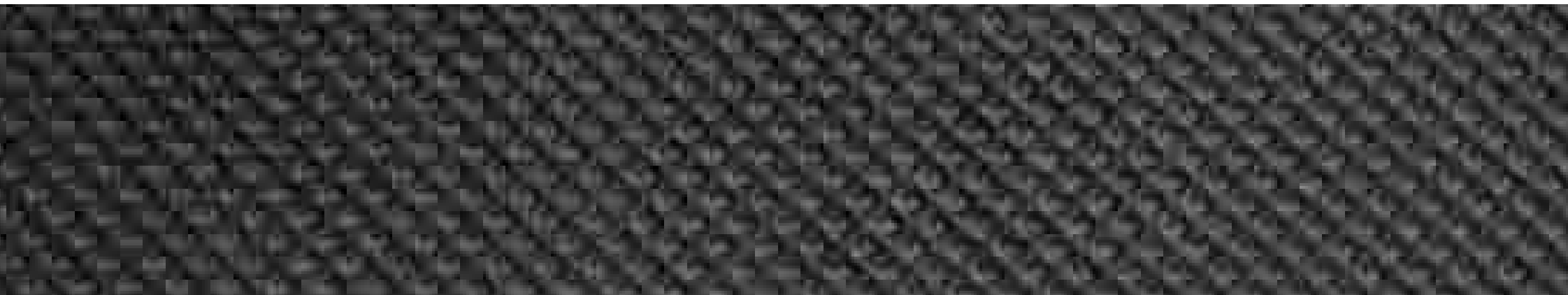


# FRAMESHIELD PLUS 150

## *user guide*



### FRAMESHIELD PLUS 150

#### Frameshield Plus 150 - A Pitched Roof Breather Underlay

Frameshield Plus 150 is a spunbonded polypropylene fabric designed for use as an unsupported/supported underlay for tiled or slated roofs.

High vapour permeability and excellent tear strength make Frameshield Plus 150 the ideal choice as a breather membrane, whether draped unsupported over rafters, installed on counter battens or directly over insulation or sarking boards.

Frameshield Plus 150 allows the escape of water vapour from within the roof structure whilst protecting against wind-driven rain, snow or dust which may penetrate the outer roof covering, providing a permanent quality breather underlay.

Exclusively developed and produced for the Proctor Group to carefully determined specifications by Britain's largest extruder and weaver of polypropylene yarns, Don & Low Nonwovens Ltd of Forfar, Scotland, Frameshield Plus 150 is the only single layer spunbonded polypropylene breather membrane manufactured in the U.K.



#### Application Details

The underlay, when installed as a fully supported system is laid over the support and secured with counterbattens, alternatively the membrane can be installed over the counterbattens and fixed at 200mm centres using corrosion resistant staples or galvanised clout nails.

Tiling battens are fixed to the counterbattens leaving an airspace between the roof sheet underlay and the tiles for drainage and ventilation.

### PHYSICAL PROPERTIES

#### Properties

##### Tensile strength

Frameshield Plus 150, tested to BS2782:3200A at 500mm/min, will achieve 8.2N along the length, 5.8N in the transverse direction.

##### Tear resistance (Nail tear)

Frameshield Plus 150, tested to MOAT 27:5.4.1, will achieve 174N in the longitudinal direction and 150N in the transverse direction.

##### Weather-tightness

Frameshield Plus 150 is designed as a secondary water shedding layer, it should not be relied on as a temporary waterproofing layer and such exposure should be kept to a minimum.

##### Breathability

Frameshield Plus 150 has a vapour permeability of 2,287g/m<sup>2</sup>/24 hours.

#### Frameshield Plus 150

Frameshield Plus 150 is produced by the continuous extrusion of polypropylene fibres which are then spun and bonded together with a combination of heat and pressure.

Installed in accordance with the recommendations of BS 5534:2003, Code of Practice for Slating and Tiling, Frameshield Plus 150 will comply with all current United Kingdom Building Regulations.

Property	Test Method	Mean Results
Resistance to water penetration	BS 4016	Pass
Water Vapour Permeability	BS 3177	2287g/m <sup>2</sup> /d
Vapour Resistance	BS 3177	0.09MNs/g
Burst strength, Wet Dry	BS 3137	718KN/M

Property	Test Method	Roll Direction	Cross Direction
Resistance to Nail Tear	MOAT 27:5.4.1	174N	150N
56 Days Water Soaked at 20°C	MOAT 27:5.4.1	154N	141N
Resistance to tear	BS 2782:360B	93N/mm	90.2N/mm
Tensile Strength (Speed 500mm (min)-1)	BS 2782:320A	8.2N/mm	5.8N/mm
24 Hours Water Soaked at 20°C	ASTM G53-84	7.4N/mm	5.8N/mm
56 Days Water Soaked at 20°C		8.2N/mm	5.5N/mm
100 Hours UV aged		8.4N/mm	5.5N/mm



### ROLL SPECIFICATION

Colour:	Grey
Weight:	150g/m <sup>2</sup>
Thickness:	0.6mm
Roll size:	1m x 50m weight 7.5kg

Alternative colours, lengths and widths made, subject to minimum order quantities.

### APPLICATION PROCEDURE

Frameshield Plus 150 must be installed and fixed in accordance with the manufacturer's instructions and the relevant recommendations of BS 5534: 2003 Installation can be carried out under all conditions normal to roofing work.



### TECHNICAL ADVICE

The A. Proctor Group has a dedicated Technical Department which can deal with installation details, view drawings for approval and give specialist advice on the correct use of the A. Proctor Group products.

A. Proctor Group Ltd, The Haugh, Blairgowrie, Perthshire, PH10 7ER

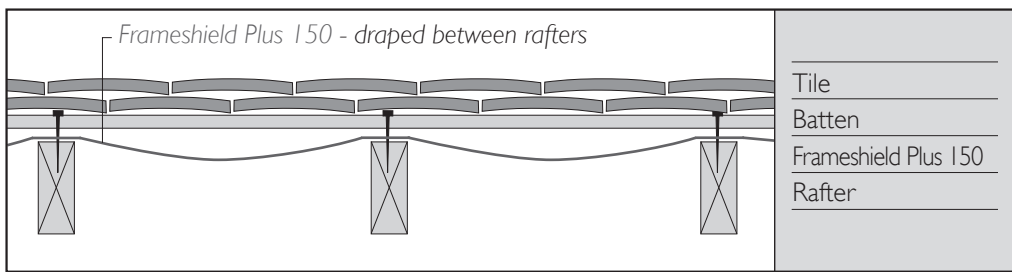
Telephone: 01250 872261

Facsimile: 01250 872727

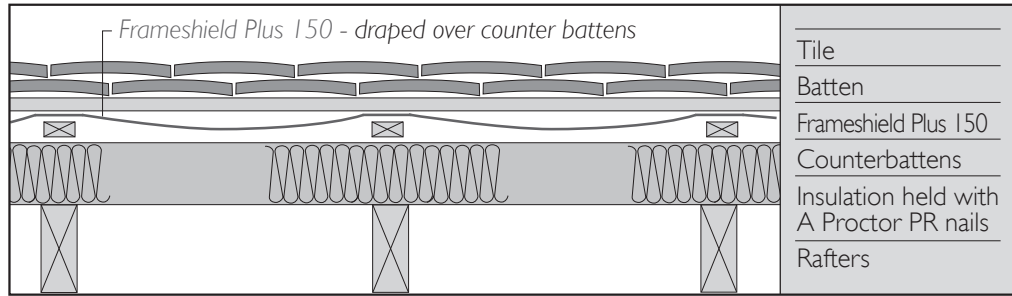
e-mail: askmembranes@proctorgroup.com

www.proctorgroup.com

## INSTALLATION DETAILS

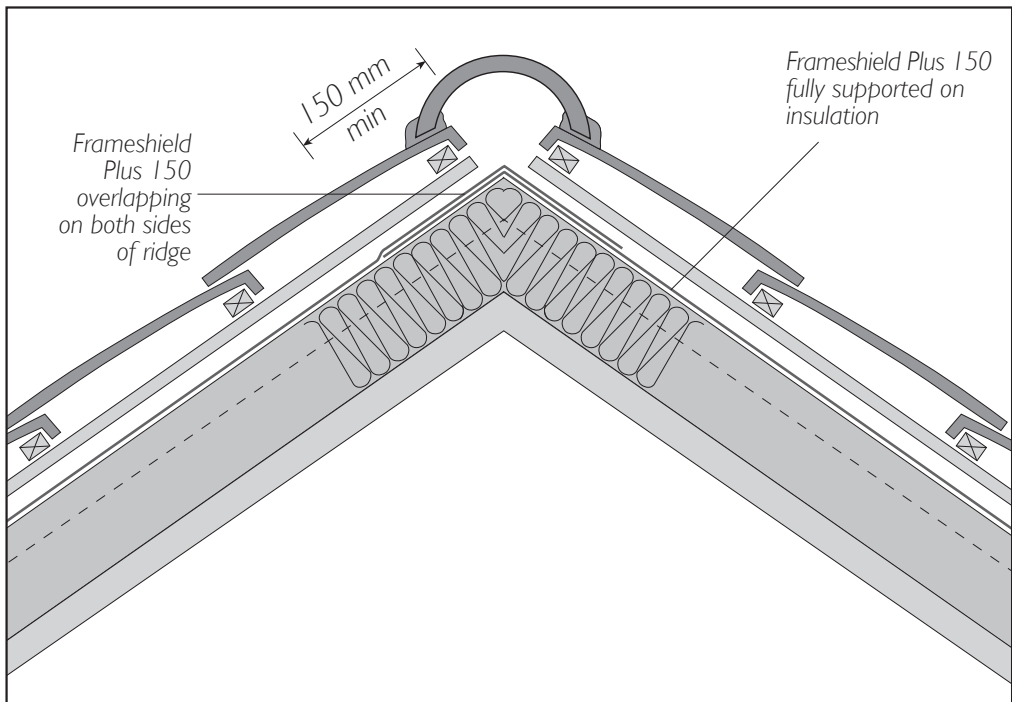


Uninsulated Tile (Cold Roof)



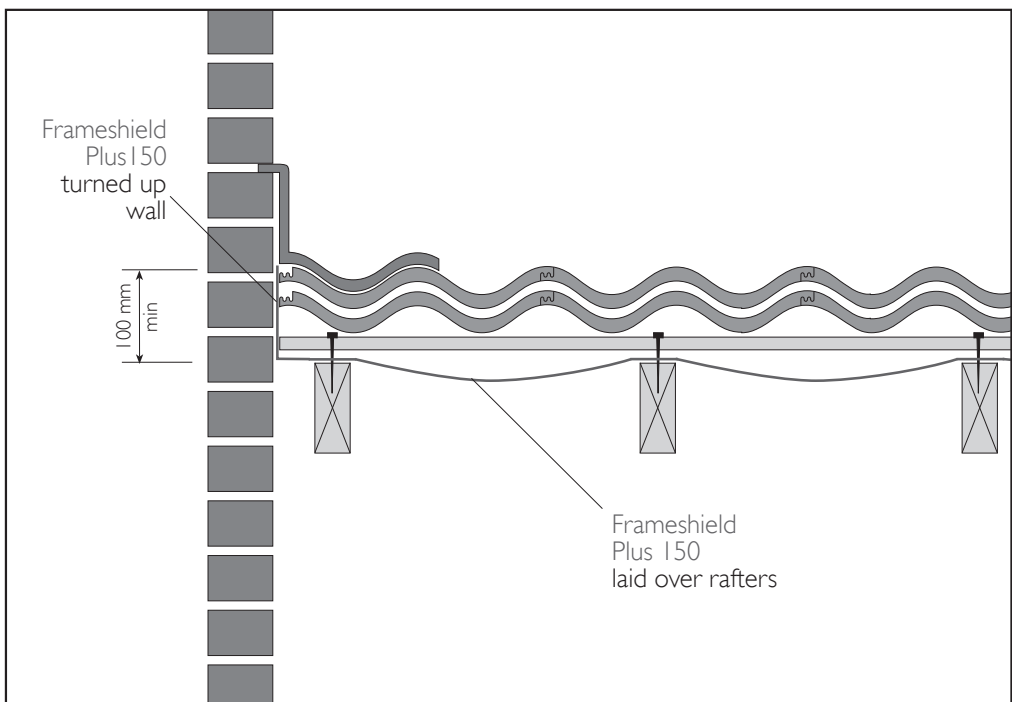
Insulated Tile (Warm Roof)

## Duopitch Detail



Duopitch detail - warm roof

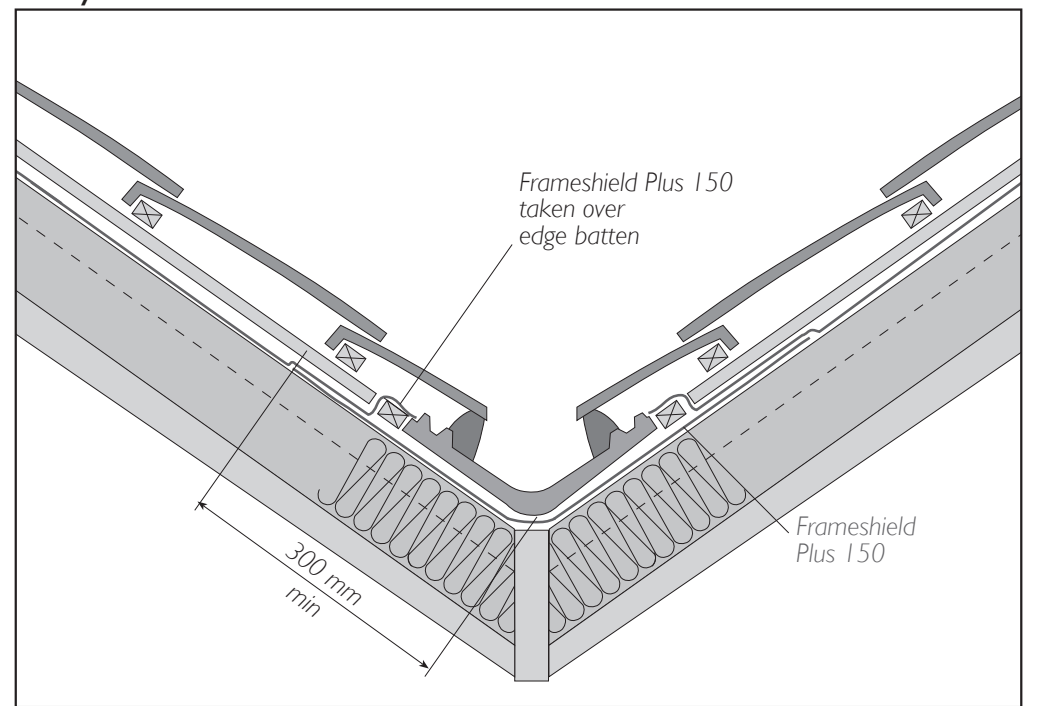
## Abutment Detail



Abutment detail - cold roof

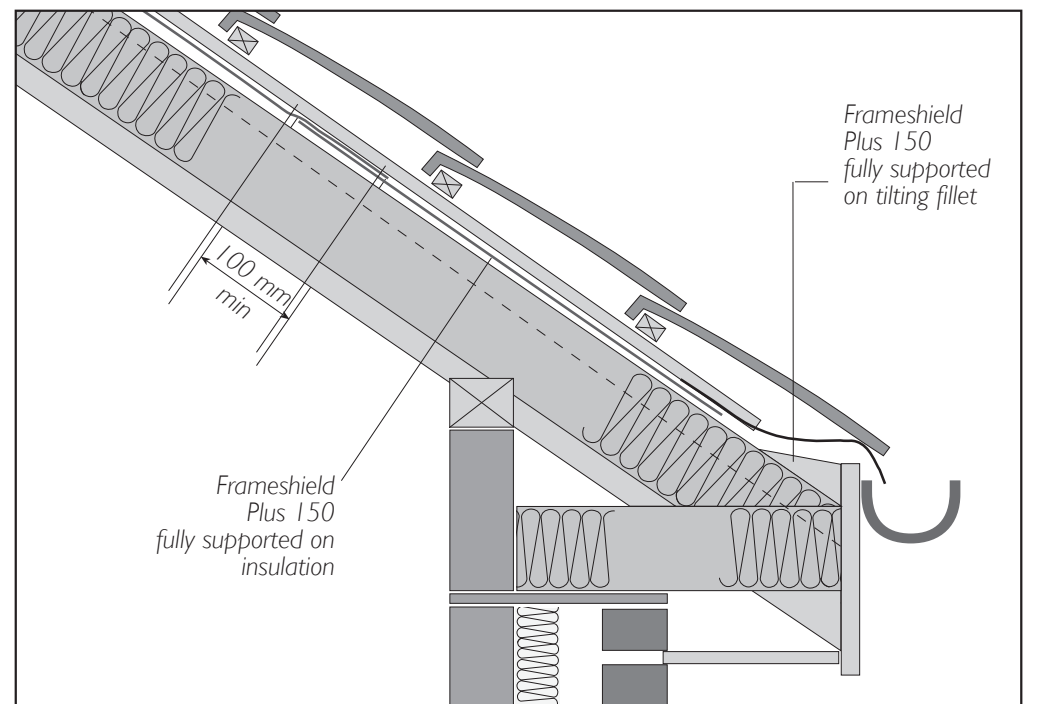
## INSTALLATION DETAILS

### Valley Detail



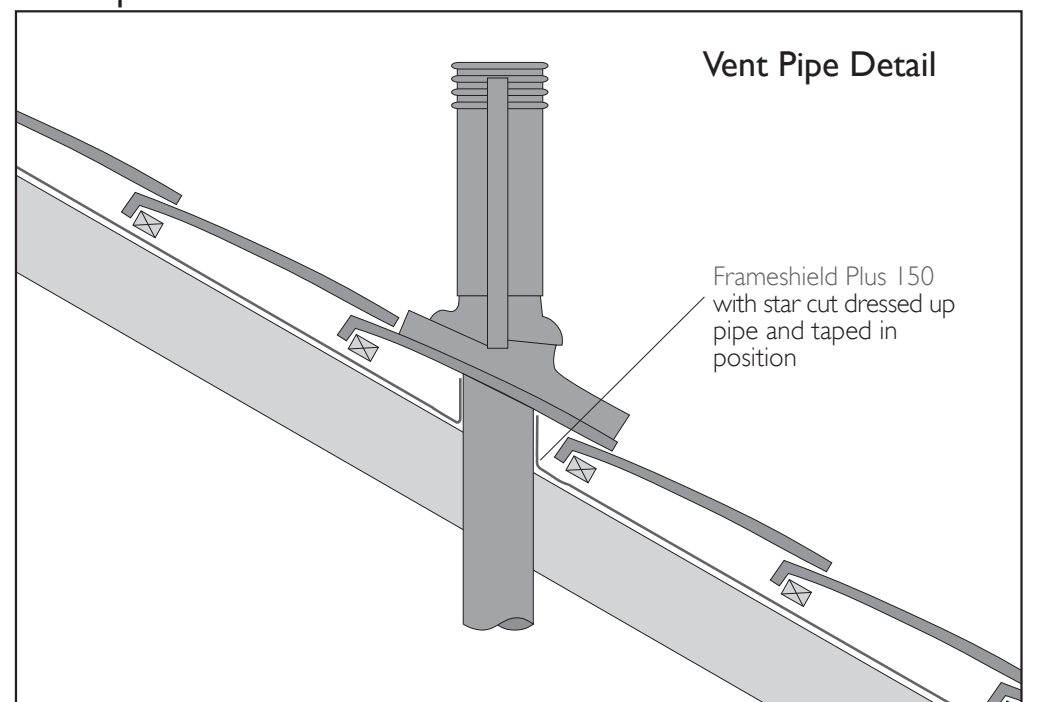
Valley detail - warm roof

### Eaves Detail



Eaves detail - warm roof

### Vent Pipe Detail



Vent pipe detail - cold roof