

 Euroform Products Ltd

VERSA  **FIRE**

A1 Non-Combustible Board
30 - 240 MINUTES FIRE PROTECTION

- STEEL PARTITIONS
- TIMBER PARTITIONS
- SUSPENDED CEILINGS

THE PRODUCT

Versafire™ is an A1 Non-Combustible board in accordance with BS EN ISO 1716:2002 and 1182: 2002 and is intended for use in both internal and external applications.

- FULLY EXTERNAL/INTERNAL
- ROT PROOF
- IMPACT RESISTANT
- ACOUSTIC PERFORMANCE
- RESISTANT TO ATTACK AGAINST VERMIN
- NON-TOXIC UNDER FIRE
- CAN BE NAILED, SCREWED, STAPLED OR BONDED

STANDARD PANEL SIZE IS 2440 x 1220 ALTHOUGH VERSAFIRE™ IS AVAILABLE IN 1830 X 915 FOR THE APPLICATION OF FIRE DOOR BLANKS.

Technical data			
Versafire™ Characteristics			
Thickness of board in mm	6	9	12
Approx kg per square metre	6.6	9.8	13.20
Manual Nailing without pre-drilled holes	☑	☑	☑
Manual screwing with pre-drilled holes	☑	☑	☑
Power screwing and nailing without pre-drilled holes	☑	☑	☑
General Internal Linings and External Claddings	Studs at 400mm centres	☑	☑
	Studs at 600mm centres		☑
Ceilings and Soffits	Joists at 400mm centres	☑	☑
	Joists at 600mm centres		☑

Density (average) 1100 Kg/m³

Product Tolerances

Thickness -0.20mm to +0.40mm
 Width -2.00mm to +2.00mm
 Length -2.00 to +2.00mm
 Squareness 5.00mm on diagonal difference

Bending Strength 13.7N/mm²

Permissible Design Value 3.4N/mm²

Surface Alkalinity 9.5pH

Thermal Conductivity 0.124W/mk

Bonding Agent

Versafire is odourless and bonding agent is free from formaldehyde

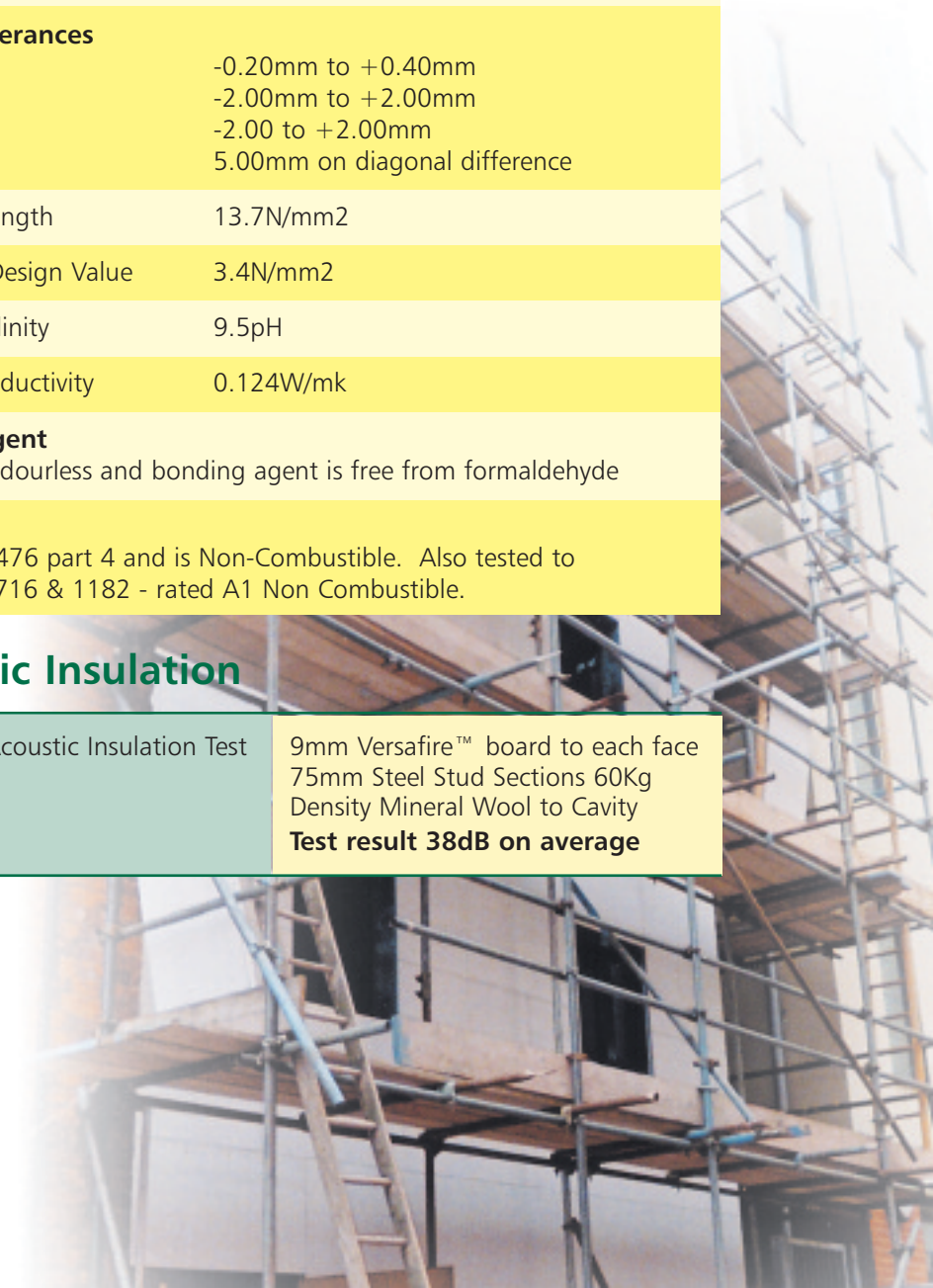
Fire Rating

Tested to BS476 part 4 and is Non-Combustible. Also tested to BS EN ISO 1716 & 1182 - rated A1 Non Combustible.

Acoustic Insulation

Versafire™ Acoustic Insulation Test

9mm Versafire™ board to each face
 75mm Steel Stud Sections 60Kg
 Density Mineral Wool to Cavity
Test result 38dB on average



APPLICATIONS

Versafire is suitable for a range of applications and is a major move forward in building board technology to meet increasingly stringent building regulations and demands for ever higher standards of durability, safety and economy.

Decorative surface treatments can be applied to Versafire in accordance with manufacturers instructions.

30 minutes - 240 minutes Fire Protection in:

Steel Partitions - Timber Partitions - Suspended Ceilings - Spandrel Panel Partitions - Cold Bridging Systems

When High Fire Resistance Is Needed

TECHNICAL DATA

NEW Technical Data CD available for data sheets on all applications (see table below).

Order your free CD now.

Fire Rating	Type	Overall Thickness
60 minutes	Steel Stud Partition	68mm
90 minutes	Steel Stud Partition	195mm
120 minutes	Steel Stud Partition	94mm
120 minutes	Steel Stud Partition	86mm
120 minutes	Steel Stud Partition	95mm
180 minutes	Steel Stud Partition	99mm
240 minutes	Steel Stud Partition	140mm
120 minutes	Timber Stud Partition	99mm
30 minutes	Timber Stud Partition	91mm
120 minutes	Suspended Ceiling	181mm

Timber Frame Partition Construction

(Example)

Framework

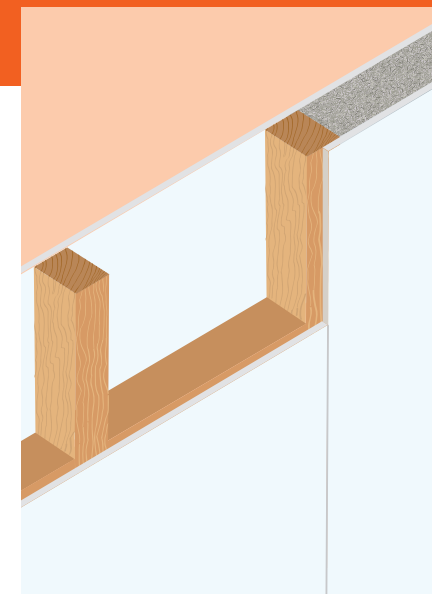
75mm x 50mm timber stud at 600mm centres with timber head and base rails.

Versafire™

12mm one layer to each face of partition with no fillets joints taped and filled using Versafiller to give joint free assembly - Versafire™ screw fixed back at 300mm centres.

Cavity Fill

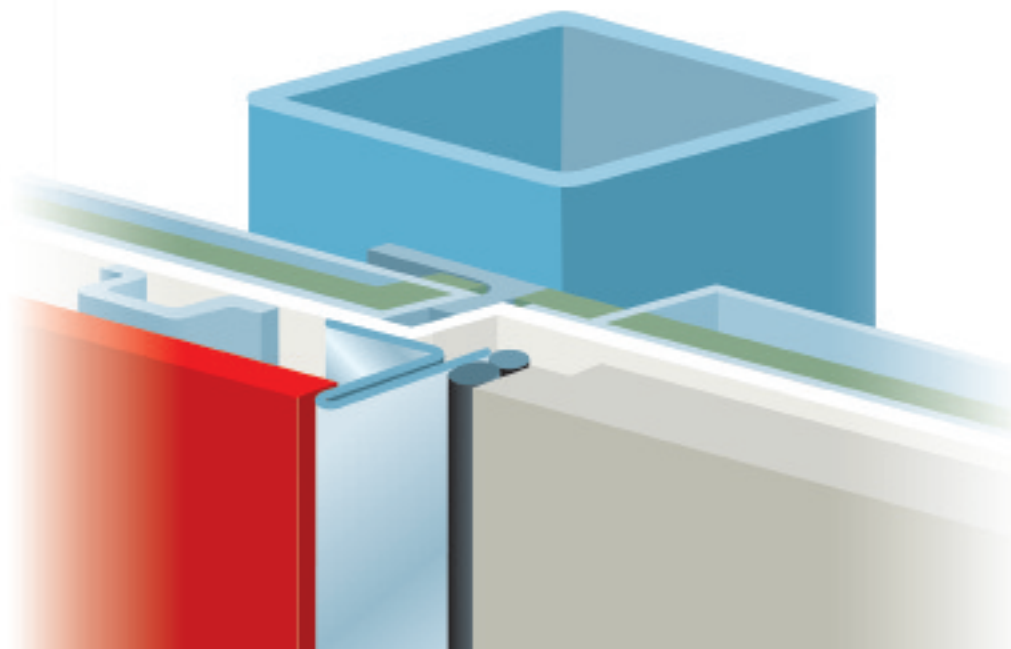
Mineral wool 70mm thick.



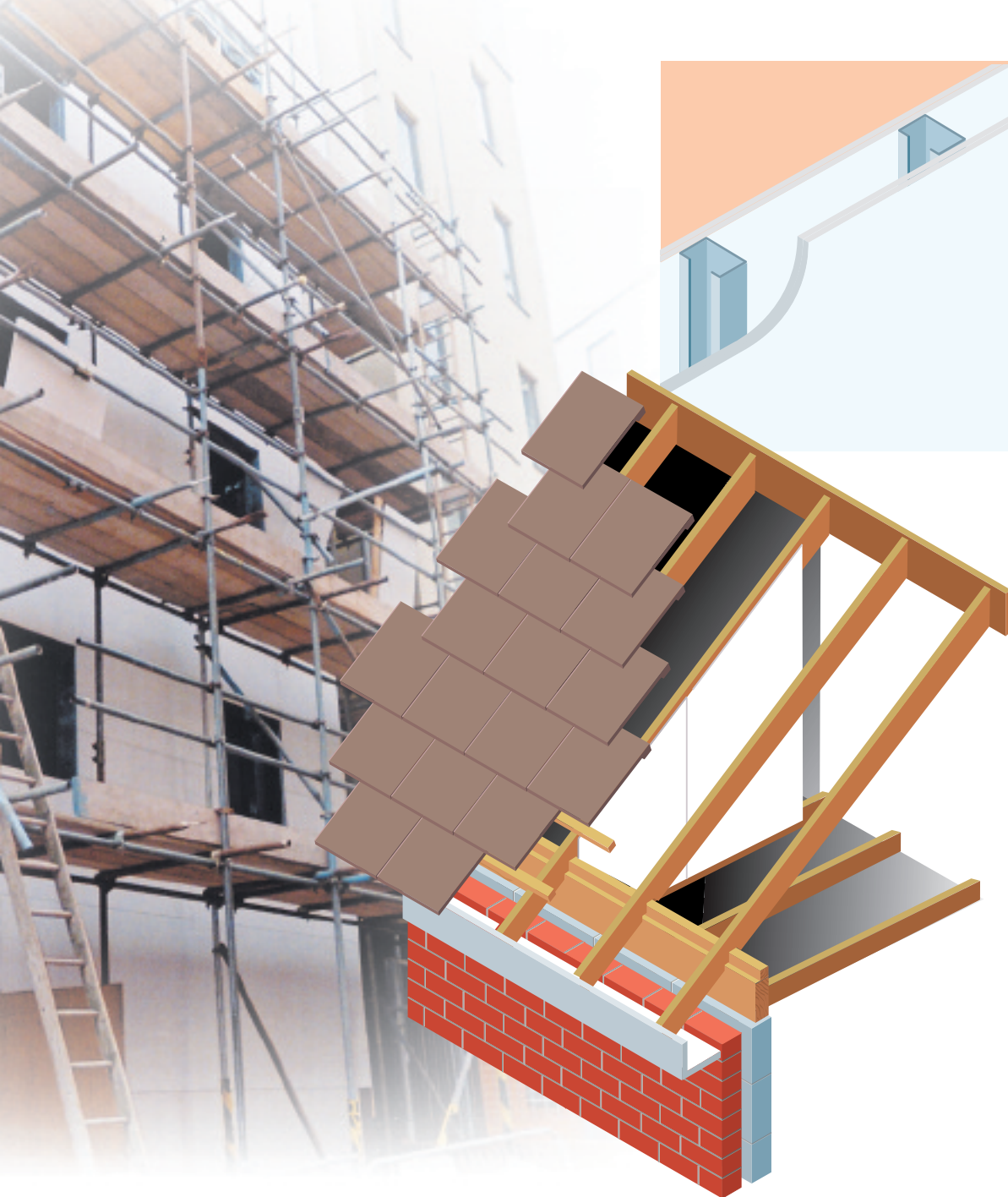
Performance

FIRE: 120 minutes for integrity and insulation.

ESTIMATED ACOUSTICS: 42dB



APPLICATIONS



Steel Frame Partition Construction

(Example)

Framework

70mm x 50mm steel studs at 600mm centres with head and base track.

Versafire™

12mm one layer to each face of partition with no fillets, joints filled using Versafiller to give joint free assembly - Versafire™ screw fixed back at 300mm centres.

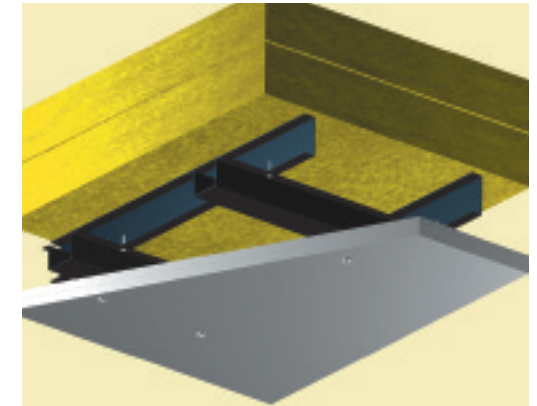
Cavity Fill

Mineral wool 60mm thick.

Performance

FIRE: 120 minutes for integrity and insulation.

ESTIMATED ACOUSTICS:
45dB



Suspended Ceiling (Example)

Framework

Primary support channels at 1000mm centres. Steel ceiling channels at 400mm centres. Two layers of 50mm 100kg/m³ mineral wool.

Versafire™

9mm two layers fixed to steel channels at 400mm centres.

Performance

Fire: 120 minutes fire resistance

Tick the following boxes for more information and fax back to **01925 860066** or visit our website **www.euroform.co.uk**

- Versapanel[®]**
- Versafire[®]**
- Versaliner[™] JPM**
- Ufoil[™]**
- Xfoil[™] Multi-Foil**
- Versachimney[™] Reflective Insulation**
- Versalayer[™]**
- Versadorm[™] & Canopies**
- Versafloor[™]**
- EZ Wall[™]**
- External Cladding**
- Specialist Fabrication Service**

Euroform Products Limited will not distribute to any other company any information given on this reply form. However, this information will be added to our Company database in order to process your request. We may contact you for further information regarding your enquiry. If you would like to be taken off our database at any time after this please let us know on 01925 860999 or email info@euroform.co.uk.

COMPANY

NAME

POSITION

ADDRESS

POST CODE

TELEPHONE

FAX

EMAIL

 **Euroform Products Ltd**

The Heliport Lyncastle Road Off Barley Castle Lane

Appleton Warrington WA4 4SN

Tel: +44 (0) 1925 860999

Fax: +44 (0) 1925 860066

Email: info@euroform.co.uk

www.euroform.co.uk



Certificate Number 3961

Due to our policy of continuous development we reserve the right to change design and specifications without prior notice. Euroform Products Limited does not accept responsibility for any loss as a result of any company or person relying on material in this publication, or for any mistakes or misprints. Although every care is taken to ensure accuracy, this brochure is a general guide and specific technical advice is recommended before proceeding with any transaction. Specific fact sheets, or, technical information is available from Euroform technical department 01925 860999. Reproduction of any part of this publication in any manner is not permitted without prior written consent from Euroform Products Limited.