



The Haugh, Blairgowrie, Perthshire, PH10 7ER

Telephone (01250) 872261

Facsimile (01250) 872727

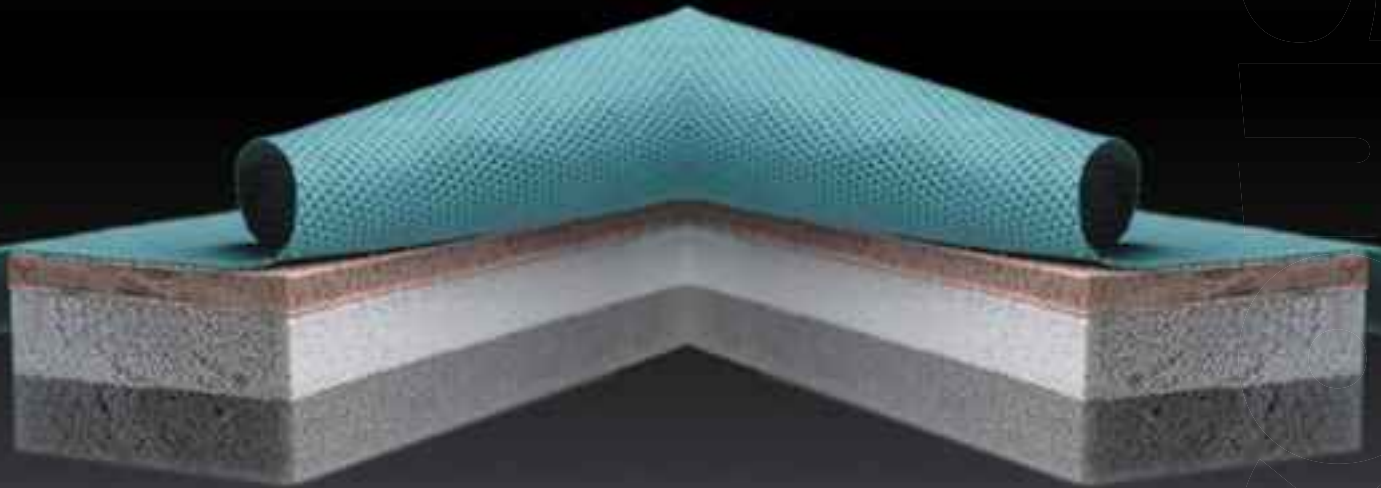
E-Mail: insulation@proctor-group.co.uk

TECLINE ADVICE SERVICE

01250 872261

PROFLOOR DYNAMIC STRIP

user guide



..the knowledge to produce solutions



MADE IN  BRITAIN

Installation Details • • • • •

5 Fixing Floor Finish

In the ribbed floor with quilt extra mass may be required. Apply Profloor Adhesive to the top surface of the Profloor Dynamic Strip. (See figure 4.)

Lay 19mm Plasterboard plank across Profloor Dynamic Strip, ensuring that all board ends rest centrally on a joist, and apply Profloor Adhesive to the surface before placing the final floor finish panels in position. (See figure 5.)

Care must be taken to avoid damaging the plasterboard plank prior to the application of the final floor finish.

6 Gluing Tongues

Profloor Adhesive should be applied to the tongues of all wood flooring panels before fitting them together. Any surplus adhesive should be removed from the surface before it dries. (See figure 6.)



Installation Details • • • • • • • • • •

7 Wood Flooring Panels

To ensure stability in the finished floor where the wood flooring panel is applied direct to the top of the Profloor Dynamic Strip, it is recommended that a timber support batten is used between joists where floor panels join mid span, alternatively use a plywood glued to Profloor Dynamic Strip below floor finish.

(See figure 7.)

Where access below the flooring system, is required the necessary hatch can be cut in the floor finish material. Additional strips should be placed round the perimeter of the hatch to support the main floor and the hatch cover. This may require additional timber noggins.

8 Skirting

Fold the Profloor Flanking Strip onto the floor board, apply weight to compress the system (the Tradesman's weight is normally sufficient) and fix the skirting so that it rests on the Profloor Flanking Strip.

Trim the edge of the Profloor Flanking Strip flush with the skirting.

This operation will ensure that the integrity of the floating floor is not affected by flanking transmission. *(See figure 8.)*

9 Partitions

If new or additional partitions are required, advice must be sought, from the manufacturer, prior to laying if the design requires that these be taken off the finished floor.

10 Kitchen/Bathroom

When a concentrated floor loading is in excess of 1.4kN, ie. (under bath, WC, Kitchen unit or night store heaters) a Profloor Support Strip can be supplied for use in small local areas. Additional noggin support may be required.

The Profloor Support Strip will give the same finished floor level, under the loaded floor, as the standard system under normal loading.

11 Fire Stops

Care should be taken at the design stage to ensure that the fire stops are fitted to the same standard as that required for the Fire Doors. Technical advice can be provided for individual projects.

12 Protection

To prevent damage by following trades, the finished floor should be covered with a protective layer immediately after installation.

Installation Details

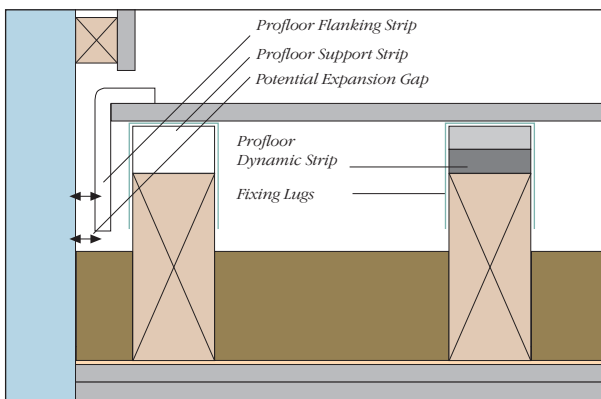


figure 1 Timber Floor with Heavy Pugging

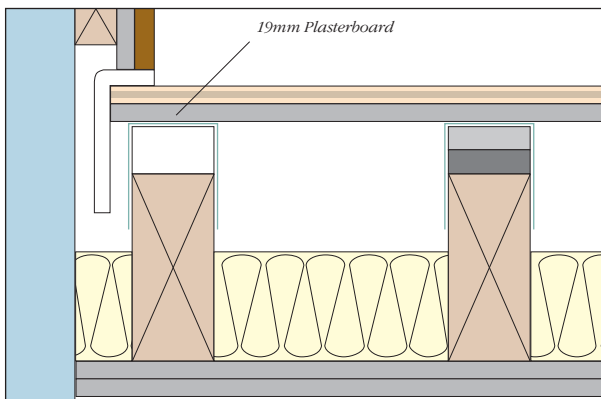


figure 2 Timber Floor, Absorbent Quilt

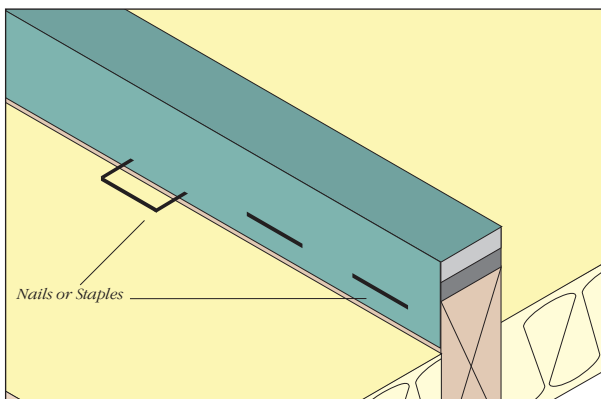


figure 3

Installation Details •••••

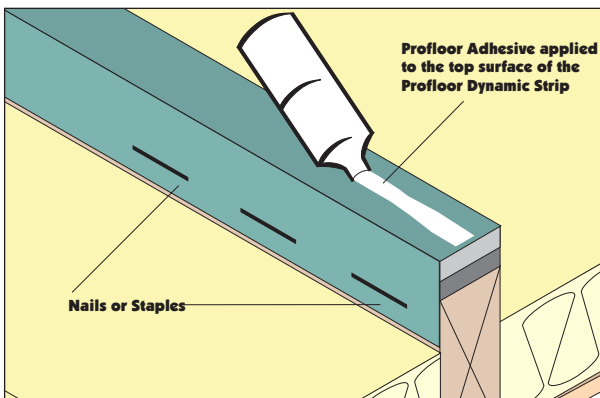


figure 4

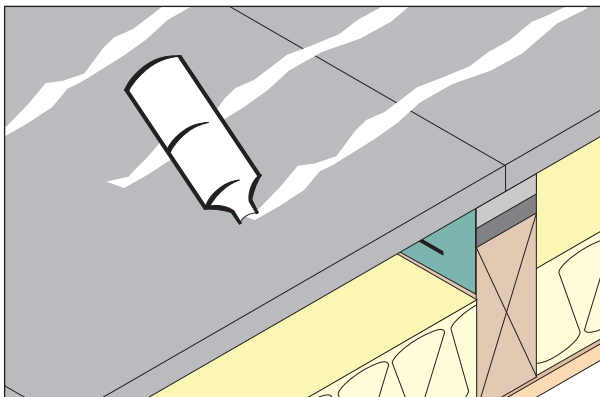


figure 5 Lay plasterboard across the Dynamic Strip

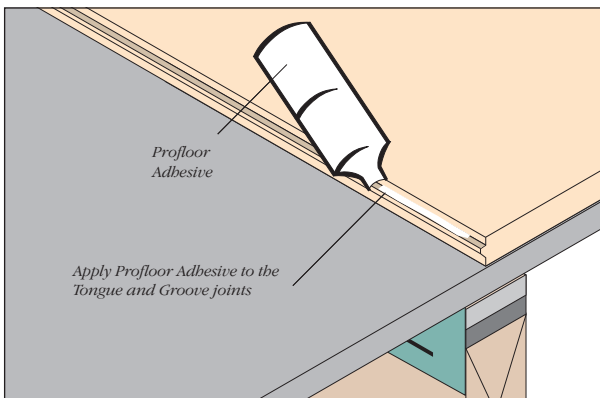


figure 6 Note: Illustration shows glue being applied to the 'Tongue'

Profloor Dynamic Strip ●●●●●

SITE CONDITIONS

Site Conditions

It is essential that site conditions are suitable for the installation of the Profloor Dynamic Strip system and laying should not commence until the correct conditions are achieved.

Sub-floor

Where the existing floor has been lifted, the timber joists must be cleaned of all nails to ensure there is no risk of penetration of the Profloor Dynamic Strip.

Sub-floor Levels

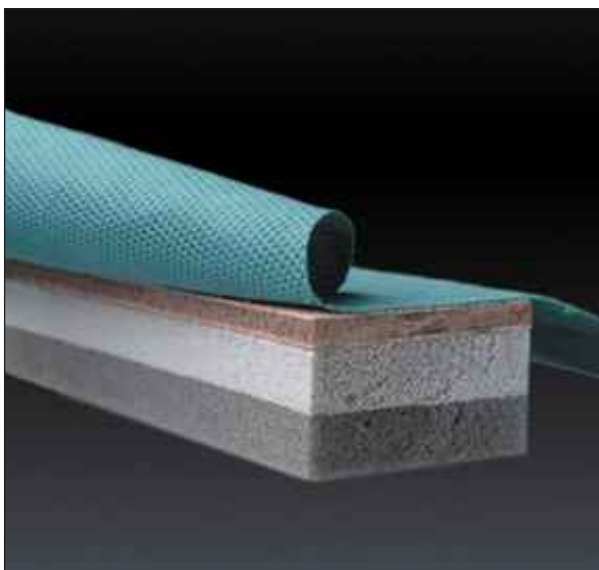
It is critical to ensure that joist levels do not vary across the floor by more than 10mm. Profloor Packing Strips, or firing pieces, should be used. Consider use of Profloor Levelling System.

Commencement of Laying

The floor system should be programmed to be laid as late as possible. All windows should be installed and glazed.



Profloor Dynamic Strip ●●●●●●



Services

Services should run such that these do not cross the joists to which the Profloor Dynamic Strips are to be fixed. Notches should be sufficiently deep to ensure that pipework does not create a solid bridge between the floor surface and the joist.

Care of Materials

Profloor Dynamic Strip should not be delivered to site until dry storage is available, preferably in the area where it is to be laid.

As a general recommendation, we would advise that a moisture resistant type of flooring is used in conjunction with Profloor Dynamic Strip system.

Technical Services

If any Technical advice is required, at either the design or installation stage, please contact the Technical Department of A Proctor Group Ltd.

Profloor Dynamic Strip

SUPPLY OF PROFLOOR DYNAMIC STRIP SYSTEM

Standard Strip Length	2.4m
Strip Size	28mm x 45mm 28mm x 75mm
Plywood thickness	6mm
Foam thickness	22mm

Compresses under normal domestic load conditions (max 1.4kN), by 6-8mm

Accessories

Profloor Support Strip	23mm x 45mm 23mm x 75mm
Profloor Flanking Strip	10m x 5mm x 100mm (other widths available)

HOW TO SPECIFY PROFLOOR DYNAMIC STRIP SYSTEM

To be laid in accordance with the manufacturer's printed instructions.

- Profloor Dynamic Strip, 2.4 x 28mm x 45mm, laid on existing joists. Specify quantity in linear metres.
- Profloor Support Strip, 2.4 x 23mm x 45mm laid at perimeter of rooms/under loads exceeding 1.4KN. Specify quantity in linear metres.
- Profloor Flanking Strip, 5mm x 100mm wide, laid at perimeter of flooring system. Specify quantity in linear metres.

Installation Details ● ● ● ● ● ● ● ●

PROFLOOR DYNAMIC STRIP

Floor surfaces that are suitable for the application of Profloor Dynamic Strip.

Laying on Timber

- Ribbed floor with absorbent material
- Ribbed floor with heavy pugging
- Traditional timber floor
- Timber Floor with Independent ceiling system

1 Sequence

It is normal practice to fix the ceiling before the floor.

2 Heavy Pugging Floor.

In the ribbed floor with heavy pugging, a ceiling of two layers of Plasterboard, with the joints staggered, to a total thickness of 25mm is fixed through the 6mm plywood to the timber joists.

A minimum of 80kg/m² pugging is placed on top of the plywood. Advice on types of pugging material can be obtained from our Technical Department.

(See figure 1.)

Further improvement on airborne transmitted sound insulation can be achieved by laying a 19mm plasterboard plank between the Profloor Dynamic Strip and the floor panels.

The floor finish can be V313 chipboard or T&G flooring. The flooring should be isolated from the structure using Profloor Flanking Strip.

3 Absorbent Quilt Floor.

The ribbed floor with 100mm absorbent material, is placed on top of a ceiling of plasterboard, with joints staggered, of a total thickness of 30mm.

Ensure that no gaps are left between the absorbent material.

(See figure 2.)

The floor finish can be V313 chipboard or T&G flooring on 19mm plasterboard plank. The flooring should be isolated from the structure using Profloor Flanking Strip.

4 Fixing Dynamic Strip to Joists

The Profloor Dynamic Strip is laid, foam side on the joists, and fixed using the fixing lugs provided, with nails or staples.

(See figure 3.)

Installation Details •••••

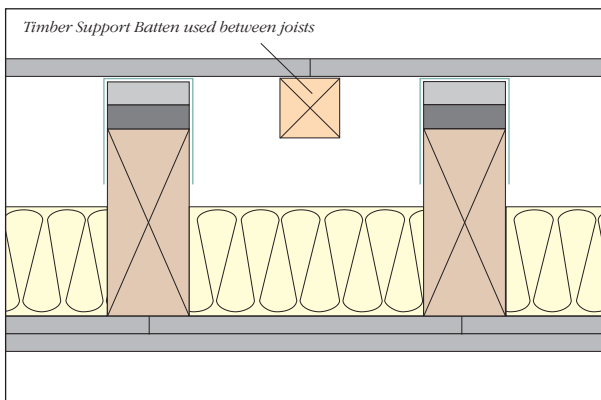


figure 7

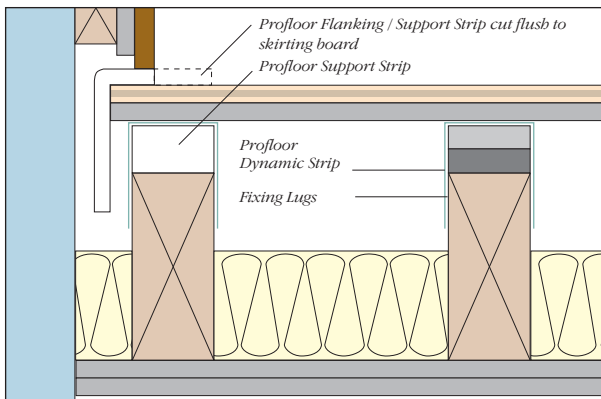


figure 8 Skirting details

Technical Advice ●●●●●●●●●●



The A. Proctor Group has a dedicated Technical Department which can deal with installation details, view drawings for approval and give specialist advice on the correct use of the A. Proctor Group products.

For Technical Advice on installation details and product applications contact the A. Proctor Tecline:

Telephone: **01250 872261**

Facsimile: **01250 872118**

e-mail. insulation@proctor-group.co.uk



..the knowledge to produce solutions