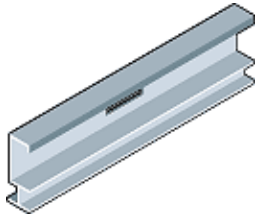


Knauf 'C-T' Stud



Galvanised steel section used as the main shaftwall stud.

Estimating Guide: 1.67 linear metres per m² partition (based on 600mm centres).

Dimensions (mm)				Article No	Pack Details	
Gauge	Size	Length	Flange		Items per Pack	Kg (Approx)
0.92	60	3000	38.5	900 97 300	10	42
		4500	38.5	900 97 450	10	63
	92	4500	38.5	901 48 450	10	73
		5500	38.5	901 48 550	10	89
	146	5500	38.5	901 49 550	10	110
		6500	38.5	901 49 650	10	130