



ROCKWOOL
FIRESAFE INSULATION

Application type	Acoustic, fire
Construction type	Cavity walls

Acoustic Party Wall dpc

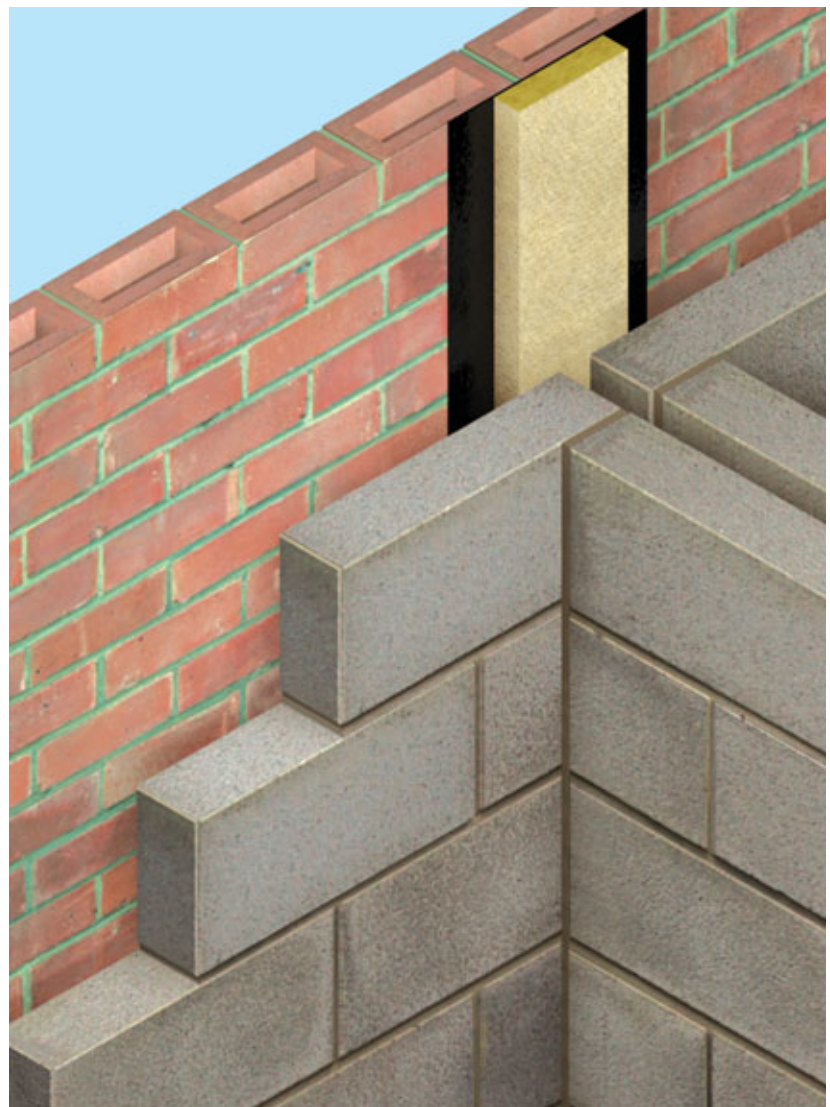
Minimises flanking sound transmission at separating walls and floor junctions

Rockwool's Acoustic Party Wall dpc cavity closer has been specially developed to minimise flanking sound transmission and fire spread along the cavity of the external wall.

The use of Rockwool Acoustic Party Wall dpc enables the specifier to close the external wall cavity at the separating wall and floor junctions to provide acoustic insulation and one hour fire resistance without the risk of water penetration.

Advantages

- Combined acoustic and fire stopping solution
- Meets Part E and Robust Detail requirements
- One hour fire resistance
- One width covers most applications
- Can be used in both vertical and horizontal applications
- Robust product



Acoustic Party Wall dpc is protected by UK Patent No. 2289433.

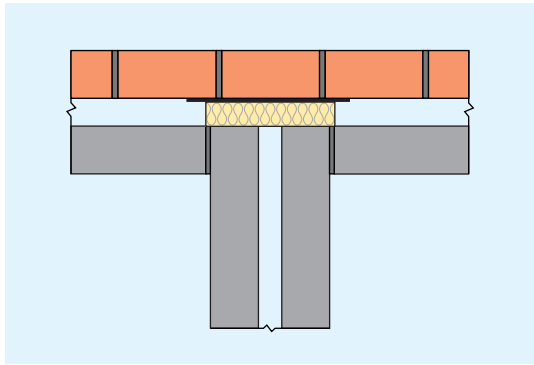


Figure 1 Plan view at separating wall junction

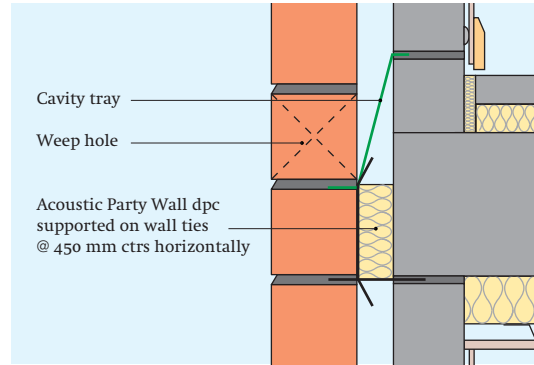


Figure 2 View showing an Acoustic Party Wall dpc in horizontal application

Description

Rockwool Acoustic Party Wall dpc is an acoustic and fire cavity closer for use at separating floor and wall junctions. It consists of a strip of glass tissue faced semi-rigid Rockwool insulation bonded to a black polyethylene dpc.

Dimensions

Rockwool insulation – white glass tissue faced

Length: 1200 mm
Width: 260 mm
Thicknesses: 50, 65, 75 & 100 mm

DPC – Black polyethylene to BS 6515

Length: 1300 mm
Side lap: 40 mm
Bottom lap: 100 mm (minimum)

Performance and properties

Fire

The product has been assessed by Warrington Fire Research Centre as giving 1 hour Integrity and Insulation in both vertical and horizontal applications (Assessment No. C81747).

Standards and approvals

Where a separating wall or floor meets the external cavity wall, Building Regulations Part E require the use of a mineral wool closer to minimise flanking sound which is protected by a suitable dpc.

Acoustic Party Wall dpc has been developed to meet this requirement.

Rockwool Acoustic Party Wall dpc complies with the requirements of BS EN 13162: 2001 Thermal insulation products for buildings Factory made mineral wool (MW) products specifications.

Applications and installation

Installation must follow good practice for the detailing of damp proof courses, as set out in the relevant clauses of BS 5628: Part 3, BS 8215 and BS 8000: Part 3.

Acoustic Party Wall dpc can be installed as a horizontal or vertical cavity closer and should be built in as brickwork/blockwork proceeds.

The dpc laps beyond the insulation width by 40 mm on each side and should be installed with dpc facing against the outer leaf.

Supplied in 1200 mm lengths of insulation, Acoustic Party Wall dpc may be easily cut on site as required.

In vertical applications, the product is self supporting. The upper piece must be installed with the 100 mm dpc extension at the bottom, lapping over the outside face of the lower dpc, ensuring a tight butt joint of the insulation.

Horizontal applications: at separating floor junctions

When used as a horizontal cavity closer, APW dpc should be supported by wall ties spaced at max. 450 mm centres horizontally which are bedded within the masonry coursing joints. A continuous cavity tray should be installed above the closer (see fig 2.)

Due to the flexible nature of Acoustic Party Wall dpc some local delamination of the Rockwool insulation may occur during site handling or installation. This does not detract from the performance of the product, either in its installation or in its long term durability.

Typical specification clause

The acoustic stopping to the external wall cavity at separating wall and floor junctions is to be Rockwool Acoustic Party Wall dpc* mm thickness, manufactured by Rockwool Limited, Pencoed, Bridgend CF35 6NY, and installed in accordance with the manufacturer's recommendations.

* Insert insulation thickness to coincide with cavity width

Packaging

Acoustic Party Wall dpc is packaged in 300 gauge heavy duty white plastic bags, 6 pieces per pack (7.2 linear metres per pack).

Health and safety

Current HSE 'CHIP' Regulations and EU directive 97/69/EC confirm the safety of Rockwool mineral wool; Rockwool fibres are not classified as a possible human carcinogen.

The maximum exposure limit for mineral wool is 5mg/m³, 8 hour time-weighted average.

A Material Safety Data Sheet is available from the Rockwool Marketing Services Department to assist in the preparation of risk assessments, as required by the Control of Substances Hazardous to Health Regulations (COSHH).

Environment

Rockwool insulation relies on entrapped air for its thermal properties; air is not a VOC and it does not have Global Warming Potential (GWP) or Ozone Depleting Potential (ODP).



More information



For further details visit our website at www.rockwool.co.uk or phone the Technical Hotline on 0871 222 1780



SoundPro range of acoustic solutions

Acoustic Party Wall dpc is a part of the Rockwool SoundPro range of acoustic solutions. Further information on the SoundPro range is available from Rockwool Marketing Services on 01656 862621.

Rockwool Limited reserves the right to alter or amend the specification of products without notice as our policy is one of constant improvement.

The information contained in this data sheet is believed to be correct at the date of publication. Whilst Rockwool will endeavour to keep its publications up to date, readers will appreciate that between publications there may be pertinent changes in the law, or other developments affecting the accuracy of the information contained in this data sheet.

The above applications do not necessarily represent an exhaustive list of applications for Acoustic Party Wall dpc. Rockwool Limited does not accept responsibility for the consequences of using Acoustic Party Wall dpc in applications different from those described above. Expert advice should be sought where such different applications are contemplated, or where the extent of any listed application is in doubt.

ROCKWOOL
FIRE SAFE INSULATION

Rockwool Limited
Pencoed, Bridgend, CF35 6NY

e info@rockwool.co.uk
www.rockwool.co.uk

Printed on recycled paper