

# Acoustic Slabs

Ci/Sfb | Rm1 | (P2)  
Ref: D5002AS | September 09

Glass mineral wool slabs designed to provide high levels of acoustic and thermal performance in wall lining systems, partitions and other building structures.

## DESCRIPTION

ISOVER Acoustic Slabs are available in two grades

- **MULTI-PURPOSE SLABS** – Providing high levels of acoustic insulation.
- **HIGH PERFORMANCE SLABS** – Combining acoustic qualities with a higher level of thermal performance.

The products are supplied in slab form in 1200mm x 600mm dimension and are used in a variety of building applications, including warranted and performance rated British Gypsum systems which are covered by the SpecSure® Lifetime Performance Warranty.

## STANDARDS

ISOVER Acoustic Slabs are manufactured under BSI Quality Management Standard BS EN ISO 9001:2008.



Certificate number: FM 01032

## BENEFITS

- Provides high levels of acoustic performance.
- Excellent thermal performance.
- Fire safe – totally non-combustible material properties.
- Long product life – material will not age.
- Easy to handle, cut and install.
- Fully compatible with all standard building materials and components.
- Excellent environmental credentials.

## FIRE PERFORMANCE

Made from inherently non-combustible materials, ISOVER Acoustic Slabs are completely fire safe, achieving a Euroclass A1 fire rating when classified in accordance with BS EN 13501-1.

## ENVIRONMENTAL INFORMATION

Isover glass mineral wool insulation is manufactured from a combination of silica sand and up to 80% recycled post-consumer glass from building regeneration projects or flat glass manufacture that would otherwise go to landfill. This makes Isover glass mineral wool one of the most environmentally sustainable insulation products available to the construction industry today. The material credentials of installing Isover glass mineral wool insulation include:

- Zero ODP (Ozone Depletion Potential)
- Zero GWP (Global Warming Potential)



Fully tested and approved for use with British Gypsum drywall systems covered by the SpecSure® Lifetime Performance Warranty



# ISOVER

The World's Leading Acoustic and Thermal Insulation

## PRODUCT PERFORMANCE AND CHARACTERISTICS

### Acoustic Performance

Glass mineral wool is a highly efficient sound absorbing material, far more effective than closed cell foam plastics. The table on the right shows sound absorbency data across a range of frequencies for **ISOVER Acoustic Slabs** in 50mm thickness.

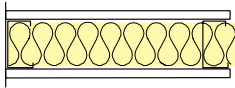
Single figure aw ratings and classifications are calculated in accordance with BS EN ISO 11654:1997.

Sound absorbency data for other thicknesses may be available on request.

### ISOVER Acoustic Slabs

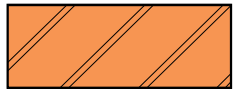
Frequency (Hz)	50mm ISOVER Multi-Purpose Slabs	50mm ISOVER High Performance Slabs
125	0.17	0.27
250	0.45	0.54
500	0.80	0.94
1000	0.89	1.07
2000	0.97	0.96
$\alpha_w$	<b>0.80</b>	<b>0.85</b>
<b>Class</b>	<b>B</b>	<b>B</b>

## PARTITIONING AND WALL LINING SYSTEM SOLUTIONS

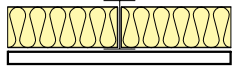


15mm Gyproc Duraline each side of Gypframe 70 S 60 'C' studs at 600mm centre. 75mm **ISOVER High Performance Slab** in the cavity.

Board Type	Lining thickness (mm)	Partition thickness (mm)	Max. partition height (mm)	Sound insulation $R_w$ dB	System reference
Duraline	1x15	102	4000	51	Q606048



Single or double layer board to one side of Gypframe 'I' Stud framework and 50mm **ISOVER Acoustic High Performance Slab**, forming an independent lining to masonry construction.



Board Type	Lining thickness (mm)	Approx. weight (kg/m <sup>3</sup> )	Sound insulation $R_w$ dB	System reference
WallBoard	1x12.5	11	59	B211601
WallBoard	1x15	13	59	B216002
WallBoard	2x12.5	20	61	B216031
WallBoard	2x15	24	61	B216033

## PACKAGING AND PHYSICAL DIMENSIONS

### Multi-Purpose Slabs

R-value (m <sup>2</sup> W/K)	Thickness (mm)	Width (mm)	Length (mm)	Pack area (m <sup>2</sup> )	Batts per pack	Packs per pallet	m <sup>2</sup> per pallet
1.28	50	600	1200	14.40	20	16	230.40
2.44	100	600	1200	7.20	10	16	115.20

### High Performance Slabs

R-value (m <sup>2</sup> W/K)	Thickness (mm)	Width (mm)	Length (mm)	Pack area (m <sup>2</sup> )	Batts per pack	Packs per pallet	m <sup>2</sup> per pallet
1.39	50	600	1200	11.52	16	20	230.40
2.08	75	600	1200	7.20	10	20	144.00



**ISOVER Acoustic Slabs** are manufactured in slab form, compression packed in individual packs using a strong polythene packaging film. The packs are then stacked on wooden pallets with final weatherproof outer covering, giving the option of outside storage.



Saint-Gobain Isover  
UK Commercial Centre  
Gotham Business Park  
Leake Road  
Gotham  
Nottinghamshire NG11 0LB  
Tel: +44 (0) 115 969 8010  
Fax: +44 (0) 115 983 1675  
www.isover.co.uk

Order Placement or Order Enquiries: 0800 032 2555

Technical Enquiries: 0115 945 1143 or E-mail [isover.enquiries@saint-gobain.com](mailto:isover.enquiries@saint-gobain.com)

Saint-Gobain Isover reserve the right to alter or amend product specification without notice. The information given in this publication is correct to the best of our knowledge at the time of publication. Whilst Saint-Gobain Isover will endeavour to ensure publications are up to date, it is the users responsibility to check with us that it is correct prior to use.